

A MULTIPHASE SHAPE OPTIMIZATION PROBLEM FOR EIGENVALUES: QUALITATIVE STUDY AND NUMERICAL RESULTS

BENIAMIN BOGOSEL , BOZHIDAR VELICHKOV

ABSTRACT. We consider the multiphase shape optimization problem

$$\min \left\{ \sum_{i=1}^h \lambda_1(\Omega_i) + \alpha |\Omega_i| : \Omega_i \text{ open, } \Omega_i \subset D, \Omega_i \cap \Omega_j = \emptyset \right\},$$

where $\alpha > 0$ is a given constant and $D \subset \mathbb{R}^2$ is a bounded open set with Lipschitz boundary. We give some new results concerning the qualitative properties of the optimal sets and the regularity of the corresponding eigenfunctions. We also provide numerical results for the optimal partitions.

1. INTRODUCTION

In this paper we consider a variational problem in which the variables are subsets of a given *ambient space* or *design region* D and the cost functional depends on the solution of a certain PDE on each of the domains. This type of problems are known as *shape optimization problems* and received a lot of attention from both the theoretical and the numerical community in the last years (we refer to the books [7], [20] and [19] for an introduction to the topic). A special type of shape optimization problems are the *multiphase shape optimization problems* in which the aim is to find the optimal configuration of h different disjoint sets $\Omega_1, \dots, \Omega_h$ with respect to a certain cost functional \mathcal{F}

$$\min \left\{ \mathcal{F}(\Omega_1, \dots, \Omega_h) : \Omega_i \subset D, \Omega_i \cap \Omega_j = \emptyset \right\}. \quad (1.1)$$

This type of problems may arise in some models studying the population dynamics of several highly competing species or in biology to simulate the behavior of a cluster of cells. In some special cases it is not restrictive from mathematical point of view to assume that the sets Ω_i fill the entire region D . This is for example the case when the functional \mathcal{F} is decreasing with respect to the set inclusion, i.e. if an empty space is left it will be immediately filled by some of the phases Ω_i decreasing the total optimization cost. Of course, it is always possible to write a multiphase problem as an optimal partition problem by adding the auxiliary phase $\Omega_{h+1} := D \setminus \left(\cup_{i=1}^h \Omega_i \right)$. On the other hand, we notice that in this way we violate the symmetry of the problem since this new phase does not appear in the functional. In some cases this does not change the nature of the problem. Consider for example an optimization cost given by the total length of the boundary $\partial \left(\cup_{i=1}^h \Omega_i \right)$, i.e.

$$\mathcal{F}(\Omega_1, \dots, \Omega_h) = \sum_{i=1}^h |\partial \Omega_i| - \sum_{i \neq j} |\partial \Omega_i \cap \partial \Omega_j|.$$

In fact in this case we may introduce the new functional

$$\tilde{\mathcal{F}}(\Omega_1, \dots, \Omega_{h+1}) = \frac{1}{2} \sum_{i=1}^{h+1} |\partial \Omega_i|,$$

which is of the same type. In other cases the introduction of Ω_{h+1} may change the nature of the problem. Consider for example a functional depending on the principal eigenvalues

on each set Ω_i and the Lebesgue measure $|\Omega_i|$

$$\mathcal{F}(\Omega_1, \dots, \Omega_h) = \frac{1}{2} \sum_{i=1}^h (\lambda_1(\Omega_i) + |\Omega_i|).$$

Then, the corresponding optimal partition functional is given by

$$\tilde{\mathcal{F}}(\Omega_1, \dots, \Omega_{h+1}) = \frac{1}{2} \sum_{i=1}^h \lambda_1(\Omega_i) - |\Omega_{h+1}|,$$

and acts differently on the original sets Ω_i and the auxiliary set Ω_{h+1} .

We consider the multiphase shape optimization problem

$$\min \left\{ \sum_{i=1}^h \lambda_1(\Omega_i) + \int_{\Omega_i} W_i(x) dx : \Omega_i \text{ open, } \Omega_i \subset D, \Omega_i \cap \Omega_j = \emptyset \right\}, \quad (1.2)$$

where

- the ambient space D is a bounded open set with Lipschitz boundary or more generally a compact manifold with or without boundary;
- $\lambda_1(\Omega_i)$ is the first Dirichlet eigenvalue of Ω_i ;
- $W_i : D \rightarrow [0, +\infty]$ are given measurable functions.

Our aim is to provide a theoretical and numerical analysis of the problem and to study the qualitative behavior of the solutions from both points of view. We notice that the optimal configurations consists of sets with rounded corners if the weight functions are sufficiently small. This phenomenon can be modeled in a direct way by adding a small curvature term, as $\varepsilon \int_{\partial\Omega} \kappa_i^2$, where κ_i is the curvature of $\partial\Omega_i$, but from the numerical point of view the volume term is much simpler to handle and gives the same qualitative behavior.

In the next two examples we see the optimization problem from two different points of view.

Remark 1.1 (Two limit cases). In the case $W_i \equiv \alpha$ on D , we obtain the following problem:

$$\min \left\{ \sum_{i=1}^h \lambda_1(\Omega_i) + \alpha |\Omega_i| : \Omega_i \text{ open, } \Omega_i \subset D, \Omega_i \cap \Omega_j = \emptyset \right\}. \quad (1.3)$$

The variational problem (1.2) is widely studied in the literature in the case $\alpha = 0$ that corresponds to the classical optimal partition problem. We refer to the papers [13], [11], [18] and [4] for a theoretical and numerical analysis in this case. The other limit case appears when the constant $\alpha > 0$ is large enough. Indeed, we recall that the solution of the problem

$$\min \left\{ \lambda_1(\Omega) + \alpha |\Omega| : \Omega \text{ open, } \Omega \subset \mathbb{R}^2 \right\}, \quad (1.4)$$

is a disk of radius $r_\alpha = \left(\frac{\lambda_1(B_1)}{\alpha\pi} \right)^{\frac{1}{4}}$. It is straightforward to check that if $\alpha > 0$ is such that there are h disjoint disks of radius r_α that fit in the box D , then the solution of (1.2) is given by the h -uple of these disks. Finding the smallest real number $\bar{\alpha} > 0$, for which the above happens, reduces to solving the optimal packing problem

$$\max \left\{ r : \text{there exist } h \text{ disjoint balls } B_r(x_1), \dots, B_r(x_h) \text{ in } D \right\}. \quad (1.5)$$

In view of the previous remark the multiphase problem (1.2), in variation of the parameter α , can be seen as an interpolation between the optimal partition problem (corresponding to the case $\alpha = 0$) and the optimal packing problem (1.5). It is interesting to notice that in the asymptotic case when $D = \mathbb{R}^2$, the solution of the optimal packing problem consists of balls with centers situated in the the vertices of a infinite hexagonal *honeycomb* partition

of the plane. On the other hand, in the case $\alpha = 0$ Caffarelli and Lin conjectured that the optimal configuration is precisely the honeycomb partition.

Remark 1.2 (Competing species with diffusion). Suppose that Ω_i represents the habitat of a certain species and that the first eigenfunction u_i on Ω_i , solution of

$$-\Delta u_i = \lambda_1(\Omega_i)u_i \quad \text{in } \Omega_i, \quad u_i = 0 \quad \text{on } \partial\Omega_i, \quad \int_{\Omega_i} u_i^2 dx = 1,$$

is the population distribution. The condition $\Omega_i \cap \Omega_j = \emptyset$ corresponds to the limit assumption that the two species cannot coexist on the same territory. We suppose that $S_i \subset D$ is a closed set representing a distribution of resources and that $\varphi_i : [0, +\infty) \rightarrow [0, +\infty)$ is a given increasing function that corresponds to the cost of transportation of resources at a given distance. The population u_i will tend to choose an habitat close to S_i . This corresponds to the following multiphase problem

$$\min \left\{ \sum_{i=1}^h \lambda_1(\Omega_i) + \int_{\Omega_i} \varphi_i(\text{dist}(x, S_i)) dx : \Omega_i \text{ open, } \Omega_i \subset D, \Omega_i \cap \Omega_j = \emptyset \right\}. \quad (1.6)$$

The first part of the paper is dedicated to the analysis of the solutions of (1.2). We summarize the results in the following

Theorem 1.3. *Suppose that $D \subset \mathbb{R}^2$ is a bounded open set with Lipschitz boundary. Let $0 < a \leq A$ be two positive real numbers and $W_i : D \rightarrow [a, A]$, $i = 1, \dots, h$ be given C^2 functions. Then there are disjoint open sets $\Omega_1, \dots, \Omega_h \subset D$ solving the multiphase optimization problem (1.2). Moreover, any solution to (1.2) has the following properties:*

- (i) *There are no triple points inside D , i.e. for every three distinct indices $i, j, k \in \{1, \dots, h\}$ we have $\partial\Omega_i \cap \partial\Omega_j \cap \partial\Omega_k = \emptyset$.*
- (ii) *There are no double points on the boundary of D , i.e. for every pair of distinct indices $i, j \in \{1, \dots, h\}$ we have $\partial\Omega_i \cap \partial\Omega_j \cap \partial D = \emptyset$.*
- (iii) *If the set D is of class C^2 , then the first eigenfunctions $u_i \in H_0^1(\Omega_i)$ are Lipschitz continuous on $\overline{\Omega_i}$.*
- (iv) *The set $\Omega = \bigcup_{i=1}^h \Omega_i$ has finite perimeter and the free reduced boundary $\partial^*\Omega$ is smooth in D . Equivalently the reduced boundary $\partial^*\Omega_{h+1}$ of the auxiliary phase $\Omega_{h+1} = D \setminus \Omega$ is smooth in D .*

Remark 1.4. We notice that the above result is still valid in dimension $d > 2$. We restrict our attention to dimension 2 since we can avoid some technicalities in the proofs of the Lipschitz continuity of the eigenfunctions and the decay monotonicity formula Lemma 3.10. In fact, a key step in the proof of the Lipschitz continuity of the eigenfunctions is to show their non-degeneracy on the boundary in terms of the gradients. This question can be handled easily in two dimensions, while for the case $d > 2$ we refer to [9, Theorem 5.9], where the case of the Dirichlet energy was considered.

For the computation of the optimal partition we use an approach that has as a starting point the algorithm used in [4]. We notice that the first eigenvalue of an open set $\Omega \subset D$ can be formally characterized as $\lambda_1(\Omega, +\infty)$, where

$$\lambda_1(\Omega, C) = \min_{u \in H_0^1(\Omega) \setminus \{0\}} \frac{\int_D |\nabla u|^2 + C \mathbb{1}_{D \setminus \Omega} u^2 dx}{\int_D u^2 dx}.$$

Replacing the characteristic function of Ω by a function $\varphi : D \rightarrow [0, 1]$ we can define

$$\lambda_1(\varphi, C) = \min_{u \in H_0^1(\Omega) \setminus \{0\}} \frac{\int_D |\nabla u|^2 + C(1 - \varphi)u^2 dx}{\int_D u^2 dx},$$

and then replace the optimal partition problem by

$$\min \left\{ \sum_{i=1}^h \lambda_1(\varphi_i, C) + \int_D \varphi_i(x) W_i(x) dx : \Omega_i \text{ open}, \varphi_i : D \rightarrow [0, 1], \sum_{i=1}^h \varphi_i \leq 1 \right\}. \quad (1.7)$$

In [4] it was proved that as $C \rightarrow +\infty$ and φ is the characteristic function of a regular set Ω , then the relaxed eigenvalue $\lambda_k(\varphi, C)$ converges to the actual eigenvalue $\lambda_k(\Omega)$. To the authors knowledge, there was no prior study of the rate of convergence in terms of C .

In Section 5 we observe the numerical error of a few simple shapes in terms of C and the discretization parameter, by comparing the values of the eigenvalues computed in the penalized setting, with the ones computed using MpsPack [3]. We observe that as C and the discretization parameter N increase, the errors decrease. In Section 6 we use the results of [8] in order to obtain a theoretical upper bound for the relative error $|\lambda_k(\Omega) - \lambda_k(\Omega, C)|/\lambda_k(\Omega)$. Precisely we will prove the following.

Theorem 1.5. *Suppose $D \subset \mathbb{R}^N$ is a bounded open set and $\Omega \subset D$ a set with boundary of class C^2 . Then there exists a constant $K > 0$ depending on Ω, D, N , for which we have*

$$\frac{|\lambda_k(\Omega) - \lambda_k(\mu_C)|}{\lambda_k(\Omega)} \leq KC^{-1/(N+4)}.$$

This bound on the error makes the convergence result proved in [4] more precise. In addition to this, we observe a good concordance between the theoretical bounds and the numerical errors observed in Section 5.

In Section 7 we present the main lines of the optimization procedure. One challenging issue was to manage well the non overlapping condition $\sum_{i=1}^h \varphi_i \leq 1$. We introduce an extra phase φ_{h+1} , which represents the void space. Thus we are left to manage an equality condition, instead of an inequality. This allows us to adapt the framework presented in [4] to our problem. We use a standard gradient descent algorithm with a line search procedure in order to accelerate the convergence. We observe good stability properties of our proposed algorithm by performing a few optimizations starting from random densities, and by observing that the resulting shape configuration, and cost values are close. In addition to the finite difference framework on a rectangular grid, we also propose an approach based on finite elements, which can be generalized to general plane domains, and even to surfaces in three dimensions.

In Section 8 we present some of the results obtained using the presented numerical frameworks, as well as some numerical observations which motivate the interest in the study of problem (1.3). First, we mention that the numerical results satisfy the theoretical properties proved in [9] and in Theorem 1.3: the lack of triple points, the lack of triple points on the boundary and the lack of angles. Secondly, we observed an interesting connection between the two interesting cases $\alpha = 0$ and the value of α which gives the circle packing, in the periodic setting. It is well known that the hexagonal circle packing in the plane has the maximal density (result attributed to A. Thue, with first rigorous proof by F. Toth). As mentioned above, in the case $\alpha = 0$ (the spectral partition), it is conjectured that the optimal asymptotic partition is the honeycomb partition. This conjecture was supported numerically by the results of [4]. As we already mentioned the problem 1.3 provides a connection between the established result of the circle packing configuration, and the Caffarelli-Lin conjecture that the regular honeycomb tiling is the solution of the spectral optimal partition problem. In our computations we observe that starting from the parameter α which realizes the circle packing in the periodic setting, and decreasing α , the shapes forming the optimal partition grow in a monotone fashion. If this observed monotonicity property could be proved theoretically, then a proof that the honeycomb

partition is optimal for $\alpha = 0$ will follow. Note that this also applies in the case of the sphere, where it is expected that for $h \in \{3, 4, 6, 12\}$ the optimal spectral partitions are realized by regular tiling of the sphere.

The paper is organized as follows. In Section 2 we recall the known results and we introduce the basic notions that we use in the proof of the above results. Section 3 is dedicated to the proof of Theorem 1.3. In Section 5 we present the eigenvalue computation method, and we make a few numerical tests, comparing our results to other methods, or to analytical results. Section 6 is dedicated to the proof of Theorem 1.5. In Section 7 we present the optimization algorithm used for calculating the numerical minimizers of (1.2). The numerical results and other observations are discussed in Section 8.

2. PRELIMINARIES AND MAIN TOOLS

2.1. Eigenvalues and eigenfunctions. Let $\Omega \subset \mathbb{R}^2$ be an open set. We denote with $H_0^1(\Omega)$ the Sobolev space obtained as the closure in $H^1(\mathbb{R}^2)$ of $C_c^\infty(\Omega)$, i.e. the smooth functions with compact support in Ω , with respect to the Sobolev norm

$$\|u\|_{H^1} := (\|\nabla u\|_{L^2}^2 + \|u\|_{L^2}^2)^{1/2} = \left(\int_{\mathbb{R}^2} |\nabla u|^2 + u^2 dx \right)^{1/2}.$$

We note that $H_0^1(\Omega)$ can be characterized as

$$H_0^1(\Omega) = \left\{ u \in H^1(\mathbb{R}^2) : \text{cap}(\{u \neq 0\} \setminus \Omega) = 0 \right\}, \quad (2.1)$$

where the capacity $\text{cap}(E)$ of a measurable set $E \subset \mathbb{R}^2$ is defined as

$$\text{cap}(E) = \min \left\{ \|u\|_{H^1}^2 : u \geq 1 \text{ in a neighbourhood of } E \right\}^1.$$

We notice that the sets of zero capacity have also zero Lebesgue measure, while the converse might be false. We may use the notion of capacity to choose more regular representatives of the functions of the Sobolev space $H^1(\mathbb{R}^d)$. In fact, every function $u \in H^1(\mathbb{R}^d)$ has a representative which is quasi-continuous, i.e. continuous outside a set of zero capacity. Moreover, two quasi-continuous representatives of the same Sobolev function coincide outside a set of zero capacity. Thus we may consider $H^1(\mathbb{R}^2)$ as a space consisting of quasi-continuous functions equipped with the usual H^1 norm.

The k th eigenvalue of the Dirichlet Laplacian can be defined through the min-max variational formulation

$$\lambda_k(\Omega) := \min_{S_k \subset H_0^1(\Omega)} \max_{u \in S_k \setminus \{0\}} \frac{\int_{\Omega} |\nabla u|^2 dx}{\int_{\Omega} u^2 dx}, \quad (2.2)$$

where the minimum is over all k dimensional subspaces S_k of $H_0^1(\Omega)$. There are functions u_1, \dots, u_k, \dots in $H_0^1(\Omega)$, orthonormal in $L^2(\Omega)$, that solve the equation

$$-\Delta u_k = \lambda_k(\Omega) u_k, \quad u_k \in H_0^1(\Omega),$$

in a weak sense in $H_0^1(\Omega)$. In particular, if $k = 1$, then the first eigenfunction u_1 of Ω is the solution of the minimization problem

$$\lambda_1(\Omega) := \min_{u \in H_0^1(\Omega) \setminus \{0\}} \frac{\int_{\Omega} |\nabla u|^2 dx}{\int_{\Omega} u^2 dx}. \quad (2.3)$$

In the sequel we will often see λ_1 as a functional on the family of open sets. We notice that this functional can be extended to the larger class of quasi-open sets, i.e. the sets $\Omega \subset \mathbb{R}^2$ such that for every $\varepsilon > 0$ there exists an open set ω_ε of capacity $\text{cap}(\omega_\varepsilon) \leq \varepsilon$ such that $\Omega \cap \omega_\varepsilon$ is an open set. We define $H_0^1(\Omega)$ as the set of Sobolev functions $u \in H^1(\mathbb{R}^2)$ such that $u = 0$ *quasi-everywhere* (i.e. outside a set of zero capacity) on Ω^c . The first eigenvalue

¹for more details see, for example, [15] or [20]

and the first eigenfunctions are still characterized as the minimum and the minimizer of (2.3).

We notice that since $|u_1|$ is also a solution of (2.3), from now on we will always assume that u_1 is non-negative and normalized in L^2 . Moreover, we have the following properties of u_1 on a generic open² set Ω of finite measure:

- u_1 is bounded and we have the estimate³

$$\|u_1\|_{L^\infty} \leq \frac{1}{\pi} \lambda_1(\Omega) |\Omega|^{1/2}. \quad (2.4)$$

- $u_1 \in H^1(\mathbb{R}^2)$, extended as zero outside Ω , satisfies the following inequality in sense of distributions:

$$\Delta u_1 + \lambda_1(\Omega) u_1 \geq 0 \quad \text{in} \quad [C_c^\infty(\mathbb{R}^2)]'. \quad (2.5)$$

- Every point $x_0 \in \mathbb{R}^2$ is a Lebesgue point for u_1 . Pointwise defined as

$$u_1(x_0) := \lim_{r \rightarrow 0} \int_{B_r(x_0)} u(x) dx,$$

u_1 is upper semi-continuous on \mathbb{R}^2 .

- u_1 is almost subharmonic in sense that for every $x_0 \in \mathbb{R}^2$, we have

$$u_1(x_0) \leq \|u_1\|_{L^\infty} \lambda_1(\Omega) r^2 + \int_{B_r(x_0)} u_1(x) dx, \quad \forall r > 0. \quad (2.6)$$

2.2. Sets of finite perimeter and reduced boundary. In the proof of Theorem 1.3 (iv) we will need the notion of a reduced boundary. Let $\Omega \subset \mathbb{R}^d$ be a set of finite Lebesgue measure. If the distributional gradient of its characteristic function $\nabla \mathbb{1}_\Omega$ is a Radon measure such that its total variation $|\nabla \mathbb{1}_\Omega|(\mathbb{R}^d)$ is finite, then we say that Ω is of finite perimeter. The perimeter $P(\Omega)$ is the total variation of the gradient and for regular sets coincides with the usual notion of perimeter as surface integral. The reduced boundary $\partial^* \Omega$ of a set Ω of finite perimeter is defined as the set of points where one can define the normal vector to Ω in the following sense: $x_0 \in \partial^* \Omega$, if the limit $\lim_{r \rightarrow 0} \frac{\nabla \mathbb{1}_\Omega(B_r(x_0))}{|\nabla \mathbb{1}_\Omega|(B_r(x_0))}$ exists and has Euclidean norm equal to one. We notice that if a point x_0 belongs to the reduced boundary, then the density of Ω in x_0 is precisely 1/2, i.e. $\lim_{r \rightarrow 0} \frac{|\Omega \cap B_r(x_0)|}{|B_r(x_0)|} = \frac{1}{2}$. For more details on the sets of finite perimeter we refer to the books [17] and [21].

2.3. The existence theory of Buttazzo and Dal Maso. The multiphase shape optimization problems of the form (1.1) admit solutions for a very general cost functional $\mathcal{F}(\Omega_1, \dots, \Omega_h)$. The main existence result in this direction is well known and is due to the classical Buttazzo-Dal Maso result from [16]. The price to pay for such a general result is that one has to relax the problem to a wider class of domains, which contains the open ones. Indeed, one notes that the capacity definition of a Sobolev space (2.1) can be easily extended to generic measurable sets. In particular, it is well known (we refer, for example, to the books [20] and [7]) that it is sufficient to restrict the analysis to the class of *quasi-open* sets, i.e. the level sets of Sobolev functions. Since the definition of the first eigenvalue (2.3) is of purely variational character, one may also extend it to the quasi-open sets and then apply the theorem of Buttazzo and Dal Maso [16] to obtain existence for (1.1) in the family of quasi-open sets under the minimal assumptions of monotonicity and semi-continuity of the function F . Thus, the study of the problem of existence of a solution of (1.1) reduces to the analysis of the regularity of the optimal quasi-open sets. The precise statement of the Buttazzo-Dal Maso Theorem that we are going to adopt is the following.

²The same properties hold for the first eigenfunction on quasi-open set of finite measure.

³We note that the infinity norm of u_1 can also be estimated in terms of $\lambda_1(\Omega)$ only as $\|u_1\|_{L^\infty} \leq C \lambda_1(\Omega)^{d/4}$. This estimate is more general and can be found in [14, Example 8.1.3].

Theorem 2.1. *Suppose that D is a bounded open sets, k_1, \dots, k_h are natural numbers, $F : \mathbb{R}^h \rightarrow \mathbb{R}$ is a continuous function increasing in each variable and let $W_i : D \rightarrow [0, +\infty]$ be given measurable functions. Then there is a solution to the problem*

$$\min \left\{ F(\lambda_{k_1}(\Omega_1), \dots, \lambda_{k_h}(\Omega_h)) + \sum_{i=1}^h \int_{\Omega_i} W_i(x) dx : \Omega_i \subset D \text{ quasi-open}, \Omega_i \cap \Omega_j = \emptyset \right\}.$$

2.4. Regularity of the optimal sets for the first eigenvalue. The regularity of the optimal sets for the Dirichlet eigenvalues is a difficult question and even in the case of a single phase it is open for higher eigenvalues. For the principal eigenvalue of the Dirichlet Laplacian we have the following result by Lamboley and Briançon which relies on an adaptation of the classical Alt-Caffarelli regularity theory to the case of eigenfunctions. We state the result here with a smooth weight function as in the original paper [1].

Theorem 2.2. *Suppose that $D \subset \mathbb{R}^2$ is a bounded open set, $W : D \rightarrow [a, A]$ is a smooth function and Ω is a solution of the shape optimization problem*

$$\min \left\{ \lambda_1(\Omega) + \int_{\Omega} W(x) dx : \Omega \subset D \text{ quasi-open} \right\}. \quad (2.7)$$

Then Ω is open set of finite perimeter and the boundary $D \cap \partial\Omega$ is locally a graph of a smooth function.

2.5. Shape subsolutions and their properties. We say that the quasi-open set $\Omega \subset \mathbb{R}^2$ is a shape subsolution for the functional $\lambda_1 + \alpha|\cdot|$ if for every quasi-open set $\omega \subset \Omega$ we have

$$\lambda_1(\Omega) + \alpha|\Omega| \leq \lambda_1(\omega) + \alpha|\omega|.$$

The notion of a shape subsolution was introduced by Bucur in [6] in order to study the existence of an optimal set for the k th eigenvalue and then was more extensively studied in [9]. We recall the main results from [6] and [9] in the following

Theorem 2.3. *Suppose that Ω is a shape subsolution for the functional $\lambda_1 + \alpha|\cdot|$. Then*

- (a) Ω is bounded and its diameter $\text{diam}(\Omega)$ is estimated by a constant depending on α , $\lambda_1(\Omega)$ and $|\Omega|$;
- (b) Ω is of finite perimeter and we have the estimate

$$P(\Omega) \leq \alpha^{-1/2} \lambda_1(\Omega) |\Omega|^{1/2}; \quad (2.8)$$

- (c) there is a lower bound on the eigenvalue $\lambda_1(\Omega)$ given by

$$\lambda_1(\Omega) \geq (4\pi\alpha)^{1/2}; \quad (2.9)$$

- (d) If Ω' is also a shape subsolution for the same functional such that $\Omega \cap \Omega' = \emptyset$, then there are disjoint open sets D and D' such that $\Omega \subset D$ and $\Omega' \subset D'$.

2.6. Monotonicity formulas for eigenfunctions. The monotonicity formula of Alt-Caffarelli-Friedman is an essential tool in the study of the behavior of the eigenfunctions in the points of the common boundary of the optimal sets. Since the eigenfunctions are not subharmonic, but satisfy (2.5), we will need another version of the monotonicity formula from [2]. We state here the following monotonicity theorem for eigenfunctions from [13], which is a version of the Alt-Caffarelli-Friedman monotonicity formula. We use this result to prove that the eigenfunctions of the optimal sets are Lipschitz continuous everywhere in D .

Theorem 2.4 (Two-phase monotonicity formula). *Consider the unit ball $B_1 \subset \mathbb{R}^2$. Let $u^+, u^- \in H^1(B_1) \cap L^\infty(B_1)$ be two non-negative functions with disjoint supports, i.e. such that $\int_{B_1} u^+ u^- dx = 0$, and let $\lambda_+, \lambda_- \geq 0$ be two real numbers such that*

$$\Delta u^+ + \lambda_+ u^+ \geq 0 \quad \text{and} \quad \Delta u^- + \lambda_- u^- \geq 0.$$

Then there are constants $1/2 \geq r_0 > 0$ and $C > 0$, depending on d , λ_+ and λ_- , such that for every $r \in (0, r_0)$ we have

$$\left(\frac{1}{r^2} \int_{B_r} |\nabla u^+|^2 dx \right) \left(\frac{1}{r^2} \int_{B_r} |\nabla u^-|^2 dx \right) \leq C \left(1 + \|u^+ + u^-\|_{L^\infty(B_{2r_0})}^2 \right)^2. \quad (2.10)$$

We note that the estimate (2.10) follows by the more general result by Caffarelli, Jerison and K enig (see [10] and also the note [24], where the continuity assumption was dropped). In order to obtain (3.21) we use the idea of Conti, Terracini and Verzini (see [13]) that follows the spirit of the original Alt-Caffarelli-Friedman monotonicity formula. It works exclusively for eigenfunctions (linear or nonlinear), but can be easily refined to obtain finer qualitative results as (3.21).

The three-phase version of Theorem 2.4 is the main tool that allows to exclude the presence of triple boundary points in the optimal configuration. The following three-phase monotonicity formula was proved for eigenfunctions in [13], while the general three-phase version of the Caffarelli-Jerison-K enig result can be found in [9] (see also [24] for the detailed proof). This formula is used in the proof of the fact that in the optimal configuration there are not triple points.

Theorem 2.5 (Three-phase monotonicity formula). *Consider the unit ball $B_1 \subset \mathbb{R}^2$. Let $u_1, u_2, u_3 \in H^1(B_1) \cap L^\infty(B_1)$ be three non-negative functions with disjoint supports, i.e. such that $\int_{B_1} u_i u_j dx = 0$ for all $i \neq j$, and let $\lambda_1, \lambda_2, \lambda_3 \geq 0$ be real numbers such that*

$$\Delta u_i + \lambda_i u_i \geq 0, \quad \forall i = 1, 2, 3.$$

Then there are constants $0 < r_0 \leq 1/2$, $C > 0$ and $\varepsilon > 0$, depending on d , λ_1 , λ_2 and λ_3 , such that for every $r \in (0, r_0)$ we have

$$\prod_{i=1}^3 \left(\frac{1}{r^2} \int_{B_r} |\nabla u_i|^2 dx \right) \leq C r^\varepsilon \left(1 + \|u_1 + u_2 + u_3\|_{L^\infty(B_{2r_0})}^2 \right)^3. \quad (2.11)$$

The three phase monotonicity formula is not just a consequence of the two phase formula. In fact if we apply the Alt-Caffarelli-Friedman formula to each pair of the tree sets Ω_i, Ω_j and Ω_k , then in (2.11) there will be no decay term r^ε . Roughly speaking the presence of the third phase forces the other two to occupy less space which in turn gives some decay with $\varepsilon > 0$. The same phenomenon appears when there are only two phases that cannot occupy a certain sufficiently big region. This is the idea that we develop in Lemma 3.10 which we will use to deduce the lack of double points on the boundary of the design region D and also the regularity of the reduced boundary of the auxiliary phase Ω_{h+1} .

3. PROOF OF THEOREM 1.3

3.1. Existence of optimal open sets. An existence of an optimal configuration in the class of quasi-open sets follows by the Buttazzo-Dal Maso Theorem. Let $\Omega_1, \dots, \Omega_h$ be the optimal quasi-open sets. Then for every quasi-open set $\omega_i \subset \Omega_i$ we have that the configuration is not optimal which gives that

$$\lambda_1(\omega_i) - \lambda_1(\Omega_i) \geq \int_{\Omega_i} W_i dx - \int_{\omega_i} W_i dx \geq a|\Omega_i| - a|\omega_i|.$$

Thus Ω_i is a shape subsolution for the functional $\lambda_1 + a|\cdot|$ and so we can apply the result from [9] Theorem 2.3 (d). Thus each of the sets Ω_i is contained in an open set D_i and solves

$$\min \left\{ \lambda_1(\Omega) + \int_{\Omega} W_i(x) dx : \Omega \subset D_i \text{ quasi-open} \right\}.$$

By Theorem 2.2 the sets Ω_i are open.

3.2. Lipschitz continuity of the eigenfunctions. In this section we prove that the first eigenfunctions on the optimal sets for (1.2) are Lipschitz continuous. To fix the notation, in the rest of this section we will denote with $(\Omega_1, \dots, \Omega_h)$ a generic solution of (1.2) and with $u_i \in H_0^1(\Omega_i)$ the first eigenfunction on Ω_i , i.e. u_i are non-negative function such that $\int_{\mathbb{R}^2} u_i^2 dx = 1$ satisfying (2.4), (2.5) and the equation

$$-\Delta u_i = \lambda_1(\Omega_i)u_i, \quad u_i \in H_0^1(\Omega_i),$$

weakly in $H_0^1(\Omega_i)$.

Non-degeneracy of the eigenfunctions. We first note that for every $\omega_i \subset \Omega_i$, the optimality of $(\Omega_1, \dots, \Omega_i, \dots, \Omega_h)$ tested against the h -uple of open sets $(\Omega_1, \dots, \omega_i, \dots, \Omega_h)$ gives the inequality

$$\lambda_1(\Omega_i) + \alpha|\Omega_i| \leq \lambda_1(\omega_i) + \alpha|\omega_i|,$$

i.e. Ω_i is a *subsolution* for the functional $\lambda_1 + \alpha|\cdot|$. Thus using the argument from the Alt-Caffarelli non-degeneracy lemma (see [1, Lemma 3.4] and also [9, Section 3]), we have the following result.

Lemma 3.1. *Suppose that $(\Omega_1, \dots, \Omega_h)$ is optimal for (1.2). Then there are constants C_{nd} and $r_0 > 0$ such that for all the first eigenfunctions u_i , every $0 < r \leq r_0$ and every $x_0 \in \mathbb{R}^2$ we have the following implication*

$$\left(B_{r/2}(x_0) \cap \Omega_i \neq \emptyset \right) \Rightarrow \left(\frac{1}{r} \int_{B_r(x_0)} u_i dx \geq C_{nd} \right). \quad (3.1)$$

Remark 3.2. Together with the estimate (2.6), Lemma 3.1 gives that there is $r_0 > 0$ such that

$$\|u_i\|_{L^\infty(B_{r/2}(x_0))} \leq 5 \int_{B_r(x_0)} u_i dx, \quad \forall r \leq r_0 \text{ such that } B_{r/2}(x_0) \cap \Omega_i \neq \emptyset. \quad (3.2)$$

On the common boundary of two optimal sets the non-degeneracy (3.1) of the mean $\int_{B_r(x_0)} u_i dx$ gives a bound from below for the gradient $\int_{B_r(x_0)} |\nabla u_i|^2 dx$. This fact follows by the elementary lemma proved below.

Lemma 3.3. *Let $R > 0$, $B_R(x_0) \subset \mathbb{R}^2$ and $U \in H^1(B_R(x_0))$ be a Sobolev function such that for almost every $r \in (0, R)$ the set $\{U = 0\} \cap \partial B_r(x_0)$ is non-empty. Then we have*

$$\frac{1}{R} \int_{B_R(x_0)} U d\mathcal{H}^1 \leq 2 \left(\int_{B_R(x_0)} |\nabla U|^2 dx \right)^{1/2}. \quad (3.3)$$

Proof. Without loss of generality we suppose that $x_0 = 0$. We first note that for almost every $r \in (0, R)$ the restriction $U|_{\partial B_r}$ is Sobolev. If, moreover, $\{U = 0\} \cap \partial B_r \neq \emptyset$, then we have

$$\int_{\partial B_r} U^2 d\mathcal{H}^1 \leq 4r^2 \int_{\partial B_r} |\nabla U|^2 d\mathcal{H}^1.$$

Applying the Cauchy-Schwartz inequality and integrating for $r \in (0, R)$, we get

$$\left(\frac{1}{R} \int_{B_R} U dx \right)^2 \leq \frac{1}{R^2} \int_{B_R} U^2 dx \leq 4 \int_{B_R} |\nabla U|^2 dx.$$

□

Corollary 3.4. *Suppose that $(\Omega_1, \dots, \Omega_h)$ is optimal for (1.2). Then there is a constant $r_0 > 0$ such that for every $x_0 \in \partial\Omega_i \cap \partial\Omega_j$, for some $i \neq j$ we have*

$$\int_{B_r(x_0)} |\nabla u_i|^2 dx \geq 4C_{nd}^2, \quad \forall r \in (0, r_0), \quad (3.4)$$

where $C_{nd} > 0$ is the non-degeneracy constant from Lemma 3.1.

Proof. Since $x_0 \in \partial\Omega_i \cap \partial\Omega_j$, we have that for every $r > 0$ $\Omega_i \cap B_r(x_0) \neq \emptyset$ and $\Omega_j \cap B_r(x_0) \neq \emptyset$. In view of Lemma 3.1, it is sufficient to check that $\Omega_i \cap \partial B_r(x_0) \neq \emptyset$ and $\Omega_j \cap \partial B_r(x_0) \neq \emptyset$, for almost every $r \in (0, r_0)$. Indeed, suppose that this is not the case and that $\Omega_i \cap \partial B_r(x_0) = \emptyset$. Since Ω_i is connected, we have that $\Omega_i \subset B_r(x_0)$, which gives $\lambda_1(\Omega_i) \geq \lambda_1(B_{r_0})$, which is impossible if we choose r_0 small enough. \square

Growth estimate of the eigenfunctions on the boundary. We now prove the two key estimates of the growth of u_i close to the boundary $\partial\Omega_i$. We consider two kinds of estimates, one holds around the points, where two phases Ω_i and Ω_j are close to each other, and is reported in Lemma 3.5. The other estimate concerns the one-phase points, i.e. the points on one boundary, say $\partial\Omega_i$, which are far away from all other sets Ω_j .

Lemma 3.5. *Suppose that $(\Omega_1, \dots, \Omega_h)$ is optimal for (1.2). Then there are constants C_2 and $r_0 > 0$ such that if $x_0 \in \partial\Omega_i$ is such that $\Omega_j \cap B_r(x_0) \neq \emptyset$, for some $j \neq i$ and $r \leq r_0$, then*

$$\|u_i\|_{L^\infty(B_r(x_0))} \leq C_2 r. \quad (3.5)$$

Proof. Without loss of generality we suppose that $0 = x_0 \in \partial\Omega_i$. Let now $0 < r \leq r_0$ be such that $\Omega_j \cap B_r \neq \emptyset$. Choosing r_0 small enough we may apply Lemma 3.1 obtaining that

$$\int_{B_{3r}} u_j dx \geq 3C_{nd} r.$$

Again by choosing r_0 small enough we may suppose that for every $r \in (0, r_0)$ we have $\partial B_{3r} \cap \Omega_i \neq \emptyset$. Indeed, if this is not the case for some r , then the set Ω_i is entirely contained in B_{3r} and so $\lambda_1(\Omega_i) \geq \lambda_1(B_{3r}) \geq \lambda_1(B_{3r_0})$, contradicting the optimality of Ω_i . Thus, we may apply the estimate (3.3) for u_j obtaining

$$C_{nd}^2 \leq \left(\frac{1}{3r} \int_{B_{3r}} u_j dx \right)^2 \leq 4 \int_{B_{3r}} |\nabla u_j|^2 dx.$$

By the two-phase monotonicity formula applied for u_i and u_j , we get that there is a constant $C > 0$ such that

$$\frac{4C}{C_{nd}^2} \geq \int_{B_{3r}} |\nabla u_i|^2 dx.$$

Since $B_r \cap \Omega_j \neq \emptyset$, by choosing r_0 small enough an reasoning as above we may suppose that for every $\tilde{r} \in (r, 3r)$ $\partial B_{\tilde{r}} \cap \Omega_j \neq \emptyset$. Thus, reasoning as in Lemma 3.3, we get that

$$4(3r)^2 \int_{B_{3r} \setminus B_{2r}} |\nabla u_i|^2 dx \geq \int_{B_{3r} \setminus B_{2r}} u_i^2 dx \geq \frac{1}{5\pi r^2} \left(\int_{B_{3r} \setminus B_{2r}} u_i dx \right)^2.$$

By the mean value formula, there is $R \in (2r, 3r)$ such that

$$\int_{\partial B_R} u_i dx \leq \frac{1}{r} \int_{2r}^{3r} \left(\int_{\partial B_s} u_i d\mathcal{H}^1 \right) ds \leq 27r \left(\int_{B_{3r}} |\nabla u_i|^2 dx \right)^{1/2} \quad (3.6)$$

We now note that by (2.5) the function $v(x) = u_i(x) - \lambda_1(\Omega_i) \|u_i\|_{L^\infty} (R^2 - |x|^2)$ is subharmonic. Then, for every $x \in B_r$, we use the Poisson formula

$$u_i(x) - \lambda_1(\Omega_i) \|u_i\|_{L^\infty} (3r)^2 \leq \frac{R^2 - |x|^2}{2\pi R} \int_{\partial B_R} \frac{u_i(y)}{|y-x|^2} d\mathcal{H}^1(y) \leq 9 \int_{\partial B_R} u_i d\mathcal{H}^1. \quad (3.7)$$

Using the non-degeneracy of u_i (Lemma 3.1) and combining the estimates from (3.6) and (3.7) we get

$$\|u_i\|_{L^\infty(B_r)} \leq 3^6 r \left(\int_{B_{3r}} |\nabla u_i|^2 dx \right)^{1/2} \leq \frac{2\sqrt{C}3^6}{C_{nd}} r. \quad (3.8)$$

\square

The following Lemma is similar to [1, Lemma 3.2] and [5, Lemma 3.1]. We sketch the proof below for the sake of completeness.

Lemma 3.6. *Suppose that $(\Omega_1, \dots, \Omega_h)$ is optimal for (1.2). Then there are constants $C_1 > 0$ and $r_0 > 0$ such that if $x_0 \in \partial\Omega_i$ and $0 < r \leq r_0$ are such that $\Omega_j \cap B_{2r}(x_0) = \emptyset$, for every $j \neq i$, then*

$$\|u_i\|_{L^\infty(B_r(x_0))} \leq C_1 r. \quad (3.9)$$

Proof. Without loss of generality we may suppose that $x_0 = 0$. Since $\Omega_j \cap B_{2r} = \emptyset$, for every $j \neq i$, we may use the h -uple $(\Omega_1, \dots, \Omega_i \cap B_{2r}, \dots, \Omega_h)$ to test the optimality of $(\Omega_1, \dots, \Omega_i, \dots, \Omega_h)$. Thus we have

$$\begin{aligned} \int_{\mathbb{R}^2} |\nabla u_i|^2 dx + \alpha |\Omega_i| &= \lambda_1(\Omega_i) + \alpha |\Omega_i| \leq \lambda_1(\Omega_i \cup B_{2r}) + \alpha |\Omega_i \cup B_r| \\ &\leq \frac{\int_{\mathbb{R}^2} |\nabla \tilde{u}_i|^2 dx}{\int_{\mathbb{R}^2} \tilde{u}_i^2 dx} + \alpha |\Omega_i \cup B_{2r}| \leq \int_{\mathbb{R}^2} |\nabla \tilde{u}_i|^2 dx + \alpha |\Omega_i \cup B_{2r}|, \end{aligned} \quad (3.10)$$

where we used the test function $\tilde{u}_i \in H_0^1(\Omega_i \cap B_{2r})$ defined as $\tilde{u}_i = v_i \mathbb{1}_{B_{2r}} + u_i \mathbb{1}_{B_{2r}^c}$ and $v_i \in H^1(B_{2r})$ is the solution of the obstacle problem

$$\min \left\{ \int_{B_{2r}} |\nabla v|^2 dx : v \in H^1(B_{2r}), v - u_i \in H_0^1(B_{2r}), v \geq u_i \right\}. \quad (3.11)$$

By (3.10) and the fact that v_i is harmonic on the set $\{v_i > u_i\}$, we get

$$\int_{B_{2r}} |\nabla(u_i - v_i)|^2 dx = \int_{B_{2r}} (|\nabla u_i|^2 - |\nabla v_i|^2) dx \leq \alpha |B_{2r} \setminus \Omega_i|. \quad (3.12)$$

Now, reasoning as in [1, Lemma 3.2] (see also [23, Lemma 4.3.20] and [9]), there is a constant $C > 0$ such that

$$|\{u_i = 0\} \cap B_{2r}| \left(\frac{1}{2r} \int_{\partial B_{2r}} u_i d\mathcal{H}^1 \right)^2 \leq C \int_{B_{2r}} |\nabla(u_i - v_i)|^2 dx. \quad (3.13)$$

Now we note that by the optimality of Ω_i , we have $\Omega_i = \{u_i > 0\}$ and $|B_{2r} \cap \{u_i = 0\}| > 0$ (if $|B_{2r} \cap \{u_i = 0\}| = 0$, then by the optimality $v_i = u_i$ in B_{2r} ; thus u_i is superharmonic in B_{2r} and so $u_i > 0$ in B_{2r} , which contradicts the assumption $0 \in \partial\Omega_i$). Now (3.12) and (3.13) give

$$\frac{1}{2r} \int_{\partial B_{2r}} u_i d\mathcal{H}^1 \leq \sqrt{C/\alpha}. \quad (3.14)$$

Since the function $\left\{ x \mapsto \left(u_i(x) - \lambda_1(\Omega_i) \|u_i\|_{L^\infty} (4r^2 - |x|^2) \right) \right\}$ is subharmonic, we can use the Poisson formula for every $x \in B_r$

$$u_i(x) - 4\lambda_1(\Omega_i) \|u_i\|_{L^\infty} r^2 \leq \frac{(2r)^2 - |x|^2}{4\pi r} \int_{\partial B_{2r}} \frac{u_i(y)}{|y-x|^2} d\mathcal{H}^1(y) \leq 4 \int_{\partial B_{2r}} u_i d\mathcal{H}^1. \quad (3.15)$$

By the non-degeneracy of u_i (Lemma 3.1) and (3.15), we have that for r_0 small enough

$$\frac{\|u_i\|_{L^\infty(B_r)}}{r} \leq \frac{5}{2r} \int_{\partial B_{2r}} u_i d\mathcal{H}^1 \leq 5\sqrt{C/\alpha},$$

which gives the claim. \square

We combine the estimates from Lemma 3.6 and Lemma 3.5, obtaining the following

Proposition 3.7. *Suppose that $(\Omega_1, \dots, \Omega_h)$ is optimal for (1.2). Then there are constants $r_0 > 0$ and $C_{12} > 0$ such that for every $i \in \{1, \dots, h\}$ we have*

$$\|u_i\|_{L^\infty(B_r(x_0))} \leq C_{12} r, \quad \forall r \in (0, r_0). \quad (3.16)$$

Conclusion of the proof of the Lipschitz continuity of the eigenfunctions. We now use the estimate from Proposition 3.7 to deduce the Lipschitz continuity of u_i . The argument is standard and we recall it briefly for the sake of completeness. It is based on the following classical lemma.

Lemma 3.8. *Suppose that $B_r \subset \mathbb{R}^2$, $f \in L^\infty(B_r)$ and $u \in H^1(B_r)$ satisfies the equation*

$$-\Delta u = f \quad \text{weakly in } [H_0^1(B_r)]'.$$

Then there is a dimensional constant $C > 0$ such that the following estimate holds

$$\|\nabla u_i\|_{L^\infty(B_{r/2})} \leq C \left(\|f\|_{L^\infty(B_r)} + \frac{\|u\|_{L^\infty(B_r)}}{r} \right). \quad (3.17)$$

We prove the following result which implies Theorem 1.3 (iii) since if the bounded open set $D \subset \mathbb{R}^2$ has boundary of class C^2 , then the function w_D defined below is Lipschitz continuous on \overline{D} .

Theorem 3.9. *Let $D \subset \mathbb{R}^2$ be a bounded open set. Let $(\Omega_1, \dots, \Omega_h)$ be optimal for (1.2). Then the corresponding first eigenfunctions u_1, \dots, u_h are locally Lipschitz continuous in D . If, moreover, D is such that the weak solution w_D of the problem*

$$-\Delta w_D = 1, \quad w_D \in H_0^1(D),$$

is Lipschitz continuous on \mathbb{R}^2 , then the first eigenfunctions u_1, \dots, u_h are globally Lipschitz continuous on \mathbb{R}^2 .

Proof. Let $r_0 > 0$ be the constant from Proposition 3.7 and fix $r_1 \leq r_0/2$. Let $x_0 \in \Omega_i$ be such that $\text{dist}(x_0, \partial D) \geq r_1$. If $r := \text{dist}(x_0, \partial \Omega_i) \geq r_1$, then by (3.17), we have

$$|\nabla u_i(x_0)| \leq C (\lambda_1(\Omega_i) + r_1^{-1}) \|u_i\|_{L^\infty}. \quad (3.18)$$

If $r := \text{dist}(x_0, \partial \Omega_i) < r_1$, then we set $y_0 \in \partial \Omega_i$ to be such that $|x_0 - y_0| = \text{dist}(x_0, \partial \Omega_i)$. Using Proposition 3.7 and again (3.17), we have

$$\begin{aligned} |\nabla u_i(x_0)| &\leq C \left(\lambda_1(\Omega_i) \|u_i\|_{L^\infty} + \frac{\|u_i\|_{L^\infty(B_r(x_0))}}{r} \right) \\ &\leq C \left(\lambda_1(\Omega_i) \|u_i\|_{L^\infty} + \frac{\|u_i\|_{L^\infty(B_{2r}(y_0))}}{r} \right) \leq C \left(\lambda_1(\Omega_i) \|u_i\|_{L^\infty} + 2C_{12} \right), \end{aligned} \quad (3.19)$$

which gives the local Lipschitz continuity of u_i .

If the function w_D is Lipschitz continuous on \mathbb{R}^d , we consider for every point $x_0 \in \Omega_i$ two possibilities for $r := \text{dist}(x_0, \partial \Omega_i)$: if $3r \geq \text{dist}(x_0, \partial D)$, then the maximum principle $u_i \leq \lambda_1(\Omega_i) \|u_i\|_{L^\infty} w_D$ and the gradient estimate (3.17) gives

$$\begin{aligned} |\nabla u_i(x_0)| &\leq C \left(\lambda_1(\Omega_i) \|u_i\|_{L^\infty} + \frac{\|u_i\|_{L^\infty(B_r(x_0))}}{r} \right) \\ &\leq C \lambda_1(\Omega_i) \|u_i\|_{L^\infty} \left(1 + \frac{\|\nabla w_D\|_{L^\infty}}{r} (\text{dist}(x_0, \partial D) + r) \right) \\ &\leq C \lambda_1(\Omega_i) \|u_i\|_{L^\infty} (1 + 4\|\nabla w_D\|_{L^\infty}). \end{aligned} \quad (3.20)$$

If $3r \leq \text{dist}(x_0, \partial D)$ and $r \leq r_0/2$, then the gradient estimate (3.17) gives again (3.19). If $r \geq r_0/2$, then we have (3.18) with $r_1 = r_0/2$ and this concludes the proof. \square

3.3. A monotonicity formula with decay. In order to prove the lack of double points on the boundary of D and the regularity of the auxiliary phase Ω_{h+1} we will need special type of a two phase monotonicity formula in which the supports of the eigenfunctions cannot invade certain prescribed zone. In this case the product of the two gradients $\left(\frac{1}{r^2} \int_{B_r} |\nabla u^+|^2 dx \right) \left(\frac{1}{r^2} \int_{B_r} |\nabla u^-|^2 dx \right)$ decays as $r \rightarrow 0$. The result is in the spirit of the three phase formula but the proof follows the idea of the proof of the two phase formula that was carried out in [13].

Lemma 3.10. *Consider the unit ball $B_1 \subset \mathbb{R}^2$. Let $u^+, u^- \in H^1(B_1) \cap L^\infty(B_1)$ be two non-negative functions with disjoint supports, i.e. such that $\int_{B_1} u^+ u^- dx = 0$, and let $\lambda_+, \lambda_- \geq 0$ be two real numbers such that*

$$\Delta u^+ + \lambda_+ u^+ \geq 0 \quad \text{and} \quad \Delta u^- + \lambda_- u^- \geq 0.$$

If, moreover, the set $\Omega := B_1 \cap \{u^+ = 0\} \cap \{u^- = 0\}$ has positive density in 0, in the sense that

$$\liminf_{r \rightarrow 0} \frac{|\Omega \cap B_r|}{|B_r|} = c > 0,$$

then there is some $\varepsilon > 0$, depending on d, λ_+, λ_- and c such that

$$\left(\frac{1}{r^2} \int_{B_r} |\nabla u^+|^2 dx \right) \left(\frac{1}{r^2} \int_{B_r} |\nabla u^-|^2 dx \right) = o(r^\varepsilon). \quad (3.21)$$

The proof of Lemma 3.10 is based on Lemma 3.12, which involves the auxiliary functions U_1 and U_2 constructed below. Let $\lambda := \max\{\lambda_+, \lambda_-\}$ and let $r_0 > 0$ be small enough such that there is a positive radially symmetric function $\varphi \in H^1(B_{r_0})$ satisfying

$$-\Delta \varphi = \lambda \varphi \quad \text{in } B_{r_0}, \quad 0 < a \leq \varphi \leq b, \quad (3.22)$$

for some constants $0 < a \leq b$ depending on d, λ and r_0 . We now introduce the notation

$$U_1 := \frac{u^+}{\varphi} \quad \text{and} \quad U_2 := \frac{u^-}{\varphi}. \quad (3.23)$$

Remark 3.11. A direct computation of the gradient and the Laplacian of U_i on B_{r_0} gives

$$\begin{aligned} \nabla U_1 &= \varphi^{-1} \nabla u^+ - \varphi^{-2} u^+ \nabla \varphi, \\ \Delta U_1 &= \varphi^{-1} \Delta u^+ - 2\varphi^{-2} (1 + \varphi^{-1} u^+) \nabla u^+ \cdot \nabla \varphi - \varphi^{-2} u^+ \Delta \varphi. \end{aligned}$$

We define the function $\Phi : [0, r_0] \rightarrow \mathbb{R}^+$ as

$$\Phi(r) := \left(\frac{1}{r^2} \int_{B_r} \varphi^2 |\nabla U_1|^2 dx \right) \left(\frac{1}{r^2} \int_{B_r} \varphi^2 |\nabla U_2|^2 dx \right). \quad (3.24)$$

Lemma 3.12. *Consider the unit ball $B_1 \subset \mathbb{R}^2$. Let $u^+, u^- \in H^1(B_1) \cap L^\infty(B_1)$ be as in Lemma 3.10 and let $\Phi : [0, r_0] \rightarrow \mathbb{R}^+$ be given by (3.24). Then*

- (a) Φ is decreasing on the interval $(0, r_0)$;
- (b) *If, moreover, the set $\Omega := B_1 \cap \{u^+ = 0\} \cap \{u^- = 0\}$ has positive density in 0, then there are constants $C > 0$ and $\varepsilon > 0$ such that*

$$\frac{1}{r^\varepsilon} \Phi(r) \leq \frac{C}{r_0^\varepsilon} \Phi(r_0).$$

Proof. We first estimate the derivative of Φ , using the notations $\nabla_n u$ and $\nabla_\tau u$ respectively for the normal and the tangential part of the gradient ∇u on the boundary of ∂B_r .

$$\begin{aligned} \frac{\Phi'(r)}{\Phi(r)} &= -\frac{4}{r} + \sum_{i=1,2} \frac{\int_{\partial B_r} \varphi^2 |\nabla U_i|^2 d\mathcal{H}^1}{\int_{B_r} \varphi^2 |\nabla \tilde{U}_i|^2 dx} \\ &\geq -\frac{4}{r} + \sum_{i=1,2} \frac{\int_{\partial B_r} \varphi^2 (|\nabla_\tau U_i|^2 + |\nabla_n U_i|^2) d\mathcal{H}^1}{\int_{\partial B_r} \varphi^2 U_i |\nabla_n U_i| d\mathcal{H}^1} \end{aligned} \quad (3.25)$$

$$\geq -\frac{4}{r} + \sum_{i=1,2} \frac{2 \left(\int_{\partial B_r} \varphi^2 |\nabla_n U_i|^2 d\mathcal{H}^1 \right)^{1/2} \left(\int_{\partial B_r} \varphi^2 |\nabla_\tau U_i|^2 d\mathcal{H}^1 \right)^{1/2}}{\left(\int_{\partial B_r} \varphi^2 U_i^2 d\mathcal{H}^1 \right)^{1/2} \left(\int_{\partial B_r} \varphi^2 |\nabla_n U_i|^2 d\mathcal{H}^1 \right)^{1/2}} \quad (3.26)$$

$$= -\frac{4}{r} + 2 \sum_{i=1,2} \left(\frac{\int_{\partial B_r} |\nabla_\tau U_i|^2 d\mathcal{H}^1}{\int_{\partial B_r} U_i^2 d\mathcal{H}^1} \right)^{1/2} \quad (3.27)$$

$$\begin{aligned} &\geq -\frac{4}{r} + 2 \sum_{i=1,2} \sqrt{\lambda_1(\partial B_r \cap \{U_i > 0\})} \\ &\geq -\frac{4}{r} + \sum_{i=1,2} \frac{2\pi}{\mathcal{H}^1(\partial B_r \cap \{U_i > 0\})}, \end{aligned} \quad (3.28)$$

where (3.25) follows by integration by parts and the inequality $-\operatorname{div}(\phi^2 \nabla U_i) \geq 0$ obtained using Remark 3.11; (3.26) is obtained by applying the mean quadratic-mean geometric inequality in the nominator and the Cauchy-Schwartz inequality in the denominator; (3.27) is due to the fact that φ is constant on ∂B_r ; (3.28) follows by a standard symmetrization argument. Setting

$$\theta(r) := \frac{\mathcal{H}^1(\Omega \cap \partial B_r)}{\mathcal{H}^1(\partial B_r)},$$

and applying the mean arithmetic-mean harmonic inequality to (3.28), we get

$$\frac{\Phi'(r)}{\Phi(r)} \geq \frac{4}{r} \left(-1 + \frac{1}{1 - \theta(r)} \right) \geq \frac{4\theta(r)}{r}, \quad (3.29)$$

which gives (a). In order to prove (b), we note that for $r_0 > 0$ small enough we have the density estimate

$$|\Omega \cap B_r| \geq c|B_r|, \quad \forall 0 < r \leq r_0.$$

Using the fact that $\frac{\partial}{\partial r} |\Omega \cap B_r| = \mathcal{H}^1(\Omega \cap \partial B_r) = 2\pi r \theta(r)$ we get

$$\int_0^r 2\pi s(\theta(s) - c) ds \geq 0, \quad \forall r \in (0, r_0). \quad (3.30)$$

As a consequence we have that

$$\int_{rc/2}^r 2\pi s \left(\theta(s) - \frac{c}{2} \right) ds \geq 0, \quad \forall r \in (0, r_0). \quad (3.31)$$

Indeed, if this is not the case, then

$$0 \leq \int_0^r 2\pi s(\theta(s) - c) ds \leq \int_0^{cr/2} 2\pi s(1 - c) ds - \int_{cr/2}^r 2\pi s \frac{c}{2} ds \leq -\pi r^2 c(1 - c)^2,$$

which is in contradiction with (3.30). By (3.31), we get that there is a constant $c_0 > 0$ such that

$$\int_{rc/2}^r \theta(s) ds \geq c_0 r, \quad \forall r < r_0. \quad (3.32)$$

By (3.29) we have

$$\begin{aligned} \log(r^{-\varepsilon}\Phi(r)) - \log((rc/2)^{-\varepsilon}\Phi(rc/2)) &= \int_{rc/2}^r \left(-\frac{\varepsilon}{s} + \frac{\Phi'(s)}{\Phi(s)}\right) ds \\ &\geq \int_{rc/2}^r \frac{4}{s} \left(-\frac{\varepsilon}{4} + \theta(s)\right) ds \geq \varepsilon \log(c/2) + 4c_0, \end{aligned}$$

which is positive for $\varepsilon > 0$ small enough. Thus, we obtain that the sequence

$$a_n := r_n^{-\varepsilon}\Phi(r_n), \quad \text{where } r_n = (c/2)^n r_0,$$

is decreasing and so, by rescaling we obtain (b). \square

Proof of Lemma 3.10. We first note that as a consequence of Remark 3.11, we have the estimates:

$$\begin{aligned} \int_{B_r} \frac{|\nabla u^\pm|^2}{|x|^{d-2}} dx &\leq 2 \int_{B_r} \varphi^2 \frac{|\nabla U_{12}|^2}{|x|^{d-2}} dx + 2 \|\varphi^{-1} \nabla \varphi\|_{L^\infty(B_{r_0})}^2 \int_{B_r} \frac{u^2}{|x|^{d-2}} dx, \\ \int_{B_r} \varphi^2 \frac{|\nabla U_{12}|^2}{|x|^{d-2}} dx &\leq 2 \int_{B_r} \frac{|\nabla u^\pm|^2}{|x|^{d-2}} dx + 2 \|\varphi^{-1} \nabla \varphi\|_{L^\infty(B_{r_0})}^2 \int_{B_r} \frac{u^2}{|x|^{d-2}} dx. \end{aligned} \tag{3.33}$$

Taking in consideration the inequality

$$\int_{B_{r_0}} \frac{|\nabla u^\pm|^2}{|x|^{d-2}} dx \leq C \left(1 + \int_{B_{2r_0}} |u^\pm|^2 dx\right), \tag{3.34}$$

proved in [10], we obtain the claim by Lemma 3.12 and simple arithmetic. \square

3.4. Multiphase points and regularity of the free boundary. This subsection is dedicated to the proof of (i), (ii) and (iv) of Theorem 1.3.

Lack of triple points. The lack of triple points was proved in [9] in the more general case of partitions concerning general functionals depending on the spectrum of the Dirichlet Laplacian. The original proof uses the notion of an energy subsolution. In the present case the lack of triple points follows directly. In fact if there are three phases $\Omega_i, \Omega_j, \Omega_k$ such that the intersection of their boundaries contains a point x_0 , then by the non-degeneracy of the gradient (Corollary 3.4) we have that the product $\prod_{i=1}^3 \left(\frac{1}{r^2} \int_{B_r} |\nabla u_i|^2 dx\right)$ remains bounded from below by a strictly positive constant, which is in contradiction with the three-phase monotonicity formula (Theorem 2.5).

Lack of two-phase points on the boundary of the box. Our first numerical simulations showed the lack of double points (i.e. points on the boundary of two distinct sets) on the boundary of the box D . We first notice that there is a quick argument that proves the above claim in the case when the boundary ∂D is smooth. Indeed, if this is the case and if $x_0 \in \partial D$, then there is a ball $B \subset D^c$ such that $x_0 \in \partial B$. Since the gradient of the first eigenfunction u on B satisfies the non-degeneracy inequality (3.4), we can use the three-phase monotonicity formula to conclude the proof.

If the boundary ∂D is only Lipschitz we need to use Lemma 3.10. Suppose, by absurd, that there is a point $x_0 \in \partial\Omega_i \cap \partial\Omega_j \cap \partial D$. If u_i and u_j are the first eigenfunctions on Ω_i and Ω_j , by Corollary 3.4 we have

$$\int_{B_r(x_0)} |\nabla u_i|^2 dx \geq C_{nd} \quad \text{and} \quad \int_{B_r(x_0)} |\nabla u_j|^2 dx \geq C_{nd}, \tag{3.35}$$

for small enough $r > 0$ and some non-degeneracy constant $C_{nd} > 0$. Since ∂D is Lipschitz, we have the density estimate $\liminf_{r \rightarrow 0} \frac{|D^c \cap B_r(x_0)|}{|B_r|} > 0$ and so, we can apply Lemma 3.10, obtaining a contradiction.

Regularity of the auxiliary set $\Omega_{h+1} = D \setminus \left(\bigcup_{i=1}^h \Omega_i \right)$. We first notice that since each of the sets $\Omega_1, \dots, \Omega_h$ is a shape subsolution for $\lambda_1 + a|\cdot|$, we have that each of these sets has finite perimeter by Theorem 2.3. As a consequence Ω_{h+1} also has finite perimeter. Suppose that $x_0 \in D \cap \partial^* \Omega_{h+1}$.

Suppose that x_0 is on the boundary of at most one phase, i.e. that there is ball $B_r(x_0)$ and an index $i \in \{1, \dots, h\}$ such that $B_r(x_0) = (B_r(x_0) \cap \Omega_i) \cup (B_r(x_0) \cap \Omega_{h+1})$. Then the set Ω_i is a solution of

$$\min \left\{ \lambda_1(\Omega) + \int_{\Omega} W_i(x) dx : \Omega \subset D_i \cap B_r(x_0), \Omega \text{ open} \right\},$$

where the set D_i is given by Theorem 2.3. By the regularity result of Briançon and Lamboley Theorem 2.2 we have that $\partial^* \Omega_{h+1} = \partial \Omega_{h+1}$ in $B_r(x_0)$ and is locally a graph of a smooth function.

Thus in order to conclude it is sufficient to prove that x_0 belonging to the boundary of just one of the phases is the only possible case. Indeed, suppose that there is $j \neq i$ such that for every ball $B_r(x_0)$ the sets $B_r(x_0) \cap \Omega_i$ and $B_r(x_0) \cap \Omega_j$ are both non-empty. By the non-degeneracy of the gradients of the eigenfunctions u_i and u_j we have that $\int_{B_r(x_0)} |\nabla u_i|^2 dx \leq C_{nd} r^2$ and $\int_{B_r(x_0)} |\nabla u_j|^2 dx \leq C_{nd} r^2$. On the other hand, since x_0 is in the reduced boundary of Ω_{h+1} we have that

$$\lim_{r \rightarrow 0} \frac{|B_r(x_0) \cap \Omega_{h+1}|}{|B_r(x_0)|} = \frac{1}{2}.$$

Thus by the decay monotonicity formula Lemma 3.10 we get

$$\lim_{r \rightarrow 0} \left(\frac{1}{r^2} \int_{B_r(x_0)} |\nabla u_i|^2 dx \right) \left(\frac{1}{r^2} \int_{B_r(x_0)} |\nabla u_j|^2 dx \right) = 0,$$

which is a contradiction. Thus every point of the reduced boundary belongs to at most one phase and $\partial^* \Omega_{h+1}$ is smooth.

4. FURTHER REMARKS AND OPEN QUESTIONS

This section is dedicated to some further developments around Theorem 1.3. In particular, using the decay monotonicity formula from Lemma 3.10 and the same argument as in Theorem 1.3 (iv) we prove that the optimal set for the second eigenfunction has smooth reduced boundary. We also discuss the extension of Theorem 1.3 to smooth surfaces and the analogous result in this case.

4.1. On the regularity of the optimal set for λ_2 . Consider the shape optimization problem

$$\min \left\{ \lambda_2(\Omega) + \alpha |\Omega| : \Omega \text{ open}, \Omega \subset D \right\}, \quad (4.1)$$

where $D \subset \mathbb{R}^2$ is a bounded open set and $\alpha > 0$. By the Buttazzo-Dal Maso Theorem this problem admits a solution in the class of quasi-open sets. The question of regularity of the solutions is quite involved and no progress was made for almost two decades until in [6] it was proved that every solution has finite perimeter and in [9] it was proved that there is an open solution characterized through a multiphase problem. In the Theorem below we answer the question of the regularity of the reduced boundary $\partial^* \Omega$ of the solutions of (4.1).

Theorem 4.1. *Let Ω be a solution of (4.1). Then the reduced boundary $D \cap \partial^* \Omega$ is smooth.*

Proof. We first notice that it was proved in [9] that for every solution Ω of the problem (4.1) there are disjoint open sets $\omega_1, \omega_2 \subset \Omega$ of the same measure as Ω , i.e. $|\Omega \setminus (\omega_1 \cup \omega_2)| = 0$ such that the set $\omega_1 \cup \omega_2$ is still a solution of (4.1) and such that the couple (ω_1, ω_2) is a solution to the multiphase problem

$$\min \left\{ \max\{\lambda_1(\omega_1), \lambda_1(\omega_2)\} + \alpha|\omega_1| + \alpha|\omega_2| : \omega_1, \omega_2 \text{ open, } \omega_{1,2} \subset D, \omega_1 \cap \omega_2 = \emptyset \right\}. \quad (4.2)$$

We notice that necessarily ω_1 and ω_2 are both connected and $\lambda_1(\omega_1) = \lambda_1(\omega_2)$, otherwise it would be possible to construct a better competitor for (4.2). Thus, by confronting the couple ω_1, ω_2 with a couple $\tilde{\omega}_1, \omega_2$ where $\tilde{\omega}_1 \subset \omega_1$ we get that ω_1 is a shape subsolution for the functional $\lambda_1 + \alpha|\cdot|$ and analogously ω_2 is a shape subsolution for the same functional. In particular, all the conclusions of Theorem 2.3 are valid. Let now $x_0 \in \partial^*\Omega$. Using the non-degeneracy of the gradient of the first eigenfunctions $u_1 \in H_0^1(\omega_1)$ and $u_2 \in H_0^1(\omega_2)$ in x_0 and the decay monotonicity formula Lemma 3.10, and reasoning as in the proof of Theorem 1.3 (iv) we get that there is a ball $B_r(x_0)$ that does not intersect one of the sets ω_1 and ω_2 . Without loss of generality $B_r(x_0) \cap \omega_2 = \emptyset$. Now by the regularity result of Brinçon and Lamboley [5] and the fact that $\partial^*\omega_1 = \partial^*\Omega$ in $B_r(x_0)$ we get that $\partial^*\Omega$ is regular in a neighbourhood of x_0 . \square

Remark 4.2. We notice that an estimate on the Hausdorff dimension of the set $\partial\Omega \setminus \partial^*\Omega$ is not available at the moment.

4.2. Multiphase shape optimization problems on smooth manifolds. We notice that all the arguments that we use are local and Theorem 1.3 can easily be extended to the case where the box (D, g) is a riemannian manifold with or without boundary. In fact the existence of an optimal partition follows by the analogous of the Buttazzo - Dal Maso Theorem proved in [9]. The Laplace-Beltrami operator Δ_g in local coordinates satisfies $\varepsilon\Delta \leq \Delta_g \leq \varepsilon^{-1}\Delta$ as an operator, where $\varepsilon > 0$ depends on D and g , and analogously the gradient satisfies $\varepsilon|\nabla u| \leq |\nabla_g u| \leq \varepsilon^{-1}|\nabla u|$, for any function $u \in H^1(D)$ expressed in local coordinates. Thus, the two and three-phase monotonicity formulas are still valid as well as the non-degeneracy of the gradient, the lack of triple points inside D and the lack of double points on the boundary of D . We regroup the results that are still valid in the following Theorem.

Theorem 4.3. *Suppose that D is a compact riemannian surface. Let $0 < a \leq A$ be two positive real numbers and $W_i : D \rightarrow [a, A]$, $i = 1, \dots, h$ be given C^2 functions. Then there are disjoint open sets $\Omega_1, \dots, \Omega_h \subset D$ solving the multiphase optimization problem (1.2) in D . Moreover, any solution to (1.2) satisfies the conditions (i), (ii) and (iii) of Theorem 1.3.*

5. NUMERICAL EIGENVALUE COMPUTATION ON A FIXED GRID

There are multiple ways of computing numerically the low Dirichlet-Laplace eigenvalues of a shape Ω , most of them requiring a good description of the boundary (for example finite elements, or fundamental solutions). In our case it is necessary to compute the first eigenvalue of a number of shapes, for which it is difficult to keep track of their boundaries. Thus, having a method which allows us to work on a fixed domain D containing the shape, greatly simplifies the treatment of the problem. Methods of this kind were used in [4],[12] in the study of spectral minimal partitions. In our study we use the method presented in [4]. We did not found any other works in the literature which study the numerical error associated to this method. In this section we present the discretization algorithm, as well as the errors obtained for a few simple shapes.

This eigenvalue computation method is inspired from penalized problems of the form

$$-\Delta u + \mu u = \lambda_k(\mu)u, \quad u \in H^1(D) \cap L^2(D, \mu), \quad (5.1)$$

N	$C = 10^3$	$C = 10^4$	$C = 10^5$	$C = 10^6$	$C = 10^7$	$C = 10^8$	$C = 10^9$
100	$5.2 \cdot 10^{-2}$	$1.8 \cdot 10^{-2}$	$1.2 \cdot 10^{-2}$	$1.1 \cdot 10^{-2}$	$1.1 \cdot 10^{-2}$	$1.1 \cdot 10^{-2}$	$1.1 \cdot 10^{-2}$
200	$5.1 \cdot 10^{-2}$	$1.1 \cdot 10^{-2}$	$1.5 \cdot 10^{-3}$	$5.5 \cdot 10^{-4}$	$7 \cdot 10^{-4}$	$7.2 \cdot 10^{-4}$	$7.2 \cdot 10^{-4}$
300	$5.6 \cdot 10^{-2}$	$1.6 \cdot 10^{-2}$	$4.7 \cdot 10^{-3}$	$2.8 \cdot 10^{-3}$	$2.6 \cdot 10^{-3}$	$2.6 \cdot 10^{-3}$	$2.6 \cdot 10^{-3}$
400	$5.7 \cdot 10^{-2}$	$1.6 \cdot 10^{-2}$	$3.9 \cdot 10^{-3}$	$1.6 \cdot 10^{-3}$	$1.3 \cdot 10^{-3}$	$1.3 \cdot 10^{-3}$	$1.3 \cdot 10^{-3}$
500	$5.7 \cdot 10^{-2}$	$1.6 \cdot 10^{-2}$	$3.8 \cdot 10^{-3}$	$1.1 \cdot 10^{-3}$	$7.9 \cdot 10^{-4}$	$7.6 \cdot 10^{-4}$	$7.5 \cdot 10^{-4}$

TABLE 1. Relative errors for the unit disk

N	$C = 10^3$	$C = 10^4$	$C = 10^5$	$C = 10^6$	$C = 10^7$	$C = 10^8$	$C = 10^9$
100	$5.1 \cdot 10^{-2}$	$1.9 \cdot 10^{-2}$	$1.3 \cdot 10^{-2}$	$1.3 \cdot 10^{-2}$	$1.3 \cdot 10^{-2}$	$1.3 \cdot 10^{-2}$	$1.3 \cdot 10^{-2}$
200	$4.4 \cdot 10^{-2}$	$5.7 \cdot 10^{-3}$	$3.7 \cdot 10^{-3}$	$4.8 \cdot 10^{-3}$	$5 \cdot 10^{-3}$	$5 \cdot 10^{-3}$	$5 \cdot 10^{-3}$
300	$6.2 \cdot 10^{-2}$	$2.2 \cdot 10^{-2}$	$1.2 \cdot 10^{-2}$	10^{-2}	10^{-2}	10^{-2}	10^{-2}
400	$5.7 \cdot 10^{-2}$	$1.6 \cdot 10^{-2}$	$5 \cdot 10^{-3}$	$2.9 \cdot 10^{-3}$	$2.7 \cdot 10^{-3}$	$2.7 \cdot 10^{-3}$	$2.7 \cdot 10^{-3}$
500	$5.4 \cdot 10^{-2}$	$1.3 \cdot 10^{-2}$	$8.3 \cdot 10^{-4}$	$1.7 \cdot 10^{-3}$	$2 \cdot 10^{-3}$	$2 \cdot 10^{-3}$	$2 \cdot 10^{-3}$

TABLE 2. Relative errors for the square of side length 2

where D is a bounded open set in \mathbb{R}^2 , and μ is a measure such that $\mu(A) = 0$ whenever A has capacity zero. The case where λ_k corresponds to a Dirichlet Laplace eigenvalue of a set $\Omega \subset D$ is included in the formulation (5.1). Indeed, if ∞_{Ω^c} is defined as follows:

$$\infty_{\Omega^c}(A) = \begin{cases} 0 & \text{if } \text{cap}(A \cap \Omega) = 0 \\ \infty & \text{otherwise} \end{cases},$$

then $\lambda_k(\infty_{\Omega^c}) = \lambda_k(\Omega)$. We have denoted $\text{cap}(A)$ the capacity of the set A . For further details about the penalized formulation (5.1), we refer to [7, Chapter 6].

This formulation suggests the following numerical method: we choose $\mu = (1 - \mathbb{1}_{\Omega})Cdx$, where $\mathbb{1}_{\Omega}$ is the characteristic function of Ω , and C is large. In [4] it is proved that as $C \rightarrow \infty$ we have $\lambda_k(C(1 - \mathbb{1}_{\Omega})dx) \rightarrow \lambda_k(\Omega)$. In the following we propose to study the behavior of this eigenvalue computation method with respect to the discretization parameter N and with respect to the choice of C . We compare these values with the ones provided by the MpsPack software [3], which is quite precise.

We consider the domain $D = [-1.5, 1.5]^2$ and on it we take a $N \times N$ uniform grid. We discretize a function $u : D \rightarrow \mathbb{R}$ by considering its values on this regular grid. For sets $\Omega \subset D$ we consider the approximation of problem (5.1) defined as

$$-\Delta u + C(1 - \mathbb{1}_{\Omega})u = \lambda_k(C\mathbb{1}_{\Omega^c}dx)u. \quad (5.2)$$

This leads us to the discretized matrix problem

$$(A + C\text{diag}(1 - \mathbb{1}_{\Omega}))u = \lambda u,$$

where A is the finite difference discretization of the Laplace operator.

We present below the relative error, compared to MpsPack, in function of the measure parameter C and the discretization parameter N . In tables 1,2,3 and 4 we present the maximal relative error $|\lambda_k^{\text{approx}} - \lambda_k|/\lambda_k$ (with $1 \leq k \leq 10$) for the unit disk, for the square of side length 2 and for the shapes presented in Figure 1. Here λ_k stands for the analytical value (when available) or the value computed with MpsPack.

In our experiments we observed that for a fixed discretization parameter N , the relative error stabilizes itself when C is large enough. This numerical effect seems to be due to the fact that Ω is approximated using a rectangular grid, so at a given N , for large C we only compute the eigenvalue of this discrete approximation of Ω .

N	$C = 10^3$	$C = 10^4$	$C = 10^5$	$C = 10^6$	$C = 10^7$	$C = 10^8$	$C = 10^9$
100	$6 \cdot 10^{-2}$	$1.8 \cdot 10^{-2}$	$1 \cdot 10^{-2}$	$9.5 \cdot 10^{-3}$	$9.4 \cdot 10^{-3}$	$9.4 \cdot 10^{-3}$	$9.4 \cdot 10^{-3}$
200	$6.5 \cdot 10^{-2}$	$1.8 \cdot 10^{-2}$	$6.1 \cdot 10^{-3}$	$4.4 \cdot 10^{-3}$	$4.2 \cdot 10^{-3}$	$4.2 \cdot 10^{-3}$	$4.2 \cdot 10^{-3}$
300	$6.7 \cdot 10^{-2}$	$1.9 \cdot 10^{-2}$	$4.9 \cdot 10^{-3}$	$2.5 \cdot 10^{-3}$	$2.2 \cdot 10^{-3}$	$2.2 \cdot 10^{-3}$	$2.2 \cdot 10^{-3}$
400	$6.8 \cdot 10^{-2}$	$1.9 \cdot 10^{-2}$	$4.7 \cdot 10^{-3}$	$1.8 \cdot 10^{-3}$	$1.4 \cdot 10^{-3}$	$1.4 \cdot 10^{-3}$	$1.4 \cdot 10^{-3}$
500	$6.9 \cdot 10^{-2}$	$2 \cdot 10^{-2}$	$5.3 \cdot 10^{-3}$	$1.9 \cdot 10^{-3}$	$1.4 \cdot 10^{-3}$	$1.4 \cdot 10^{-3}$	$1.4 \cdot 10^{-3}$

TABLE 3. Relative errors for the shape presented in Figure 1 (left)

N	$C = 10^3$	$C = 10^4$	$C = 10^5$	$C = 10^6$	$C = 10^7$	$C = 10^8$	$C = 10^9$
100	$6.9 \cdot 10^{-2}$	$2.2 \cdot 10^{-2}$	$1.4 \cdot 10^{-2}$	$1.3 \cdot 10^{-2}$	$1.3 \cdot 10^{-2}$	$1.3 \cdot 10^{-2}$	$1.3 \cdot 10^{-2}$
200	$7.2 \cdot 10^{-2}$	$2 \cdot 10^{-2}$	$6.8 \cdot 10^{-3}$	$4.8 \cdot 10^{-3}$	$4.6 \cdot 10^{-3}$	$4.6 \cdot 10^{-3}$	$4.6 \cdot 10^{-3}$
300	$7.4 \cdot 10^{-2}$	$2.1 \cdot 10^{-2}$	$5.9 \cdot 10^{-3}$	$3.3 \cdot 10^{-3}$	$3 \cdot 10^{-3}$	$2.9 \cdot 10^{-3}$	$2.9 \cdot 10^{-3}$
400	$7.6 \cdot 10^{-2}$	$2.2 \cdot 10^{-2}$	$6.1 \cdot 10^{-3}$	$2.8 \cdot 10^{-3}$	$2.4 \cdot 10^{-3}$	$2.4 \cdot 10^{-3}$	$2.4 \cdot 10^{-3}$
500	$7.6 \cdot 10^{-2}$	$2.3 \cdot 10^{-2}$	$5.6 \cdot 10^{-3}$	$1.8 \cdot 10^{-3}$	$1.3 \cdot 10^{-3}$	$1.3 \cdot 10^{-3}$	$1.3 \cdot 10^{-3}$

TABLE 4. Relative errors for the shape presented in Figure 1 (right)

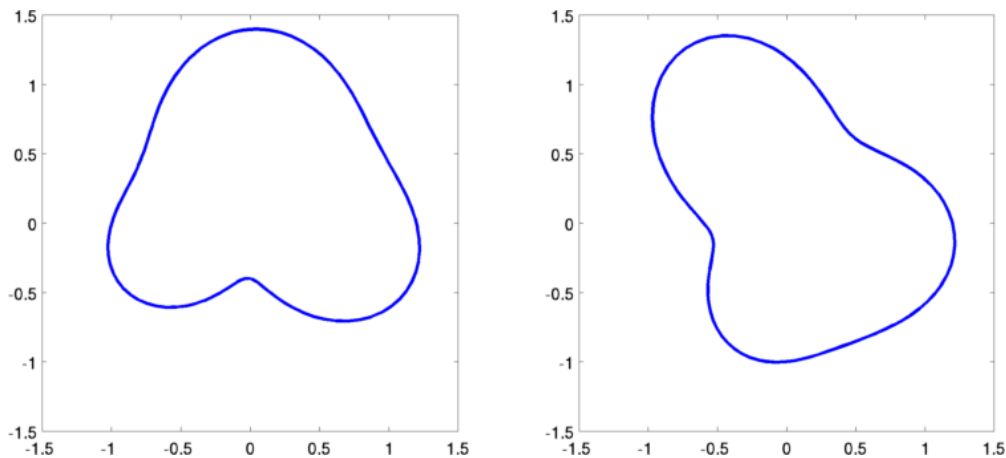


FIGURE 1. Shapes for which we test the method in Table 3 (left) and Table 4 (right)

6. PROOF OF THEOREM 1.5

In this section, we give a theoretical estimate of the relative error obtained when working with the penalized method. We study the difference between the eigenvalue $\lambda_k(C\mathbb{1}_{\Omega^c}dx)$, given by (5.2), and $\lambda_k(\Omega)$. We fix $\Omega \subset D$ to be an open set with boundary of class C^2 . In the following, we denote $\mu_C = C\mathbb{1}_{\Omega^c}dx$.

We consider the functions w, w_C defined as follows

$$-\Delta w = 1 \text{ in } \Omega, \quad w \in H_0^1(\Omega),$$

$$-\Delta w_C + C\mathbb{1}_{\Omega^c}w_C = 1 \text{ in } D, \quad w_C \in H_0^1(D).$$

Note that the standard maximum principle implies that $w_C \geq w$ on D . Using the terminology defined in [8] we note that $\mu_C dx \prec \infty_{\Omega^c}$ so cf. [8, Lemma 4.3] and [6, Lemma 4.1] the following estimate holds

$$\|\mathcal{R}_{\mu_C} - \mathcal{R}_{\infty_{\Omega^c}}\|_{\mathcal{L}(L^2)} \leq C_{N,\Omega} \|w_C - w\|_{L^1}.$$

In general, we denote R_μ the resolvent operator associated to the problem

$$-\Delta u + u\mu = f, \quad u \in H_0^1(D) \cap L^2(D, \mu).$$

Using [7, Corollary 6.1.8] we obtain the estimate

$$\left| \frac{1}{\lambda_k(\mu_C)} - \frac{1}{\lambda_k(\Omega)} \right| \leq \|\mathcal{R}_{\mu_C} - \mathcal{R}_{\infty\Omega^c}\|_{\mathcal{L}(L^2)} \leq C_{N,\Omega} \|w_C - w\|_{L^1}.$$

Thus, we have

$$\frac{|\lambda_k(\Omega) - \lambda_k(\mu_C)|}{\lambda_k(\Omega)} \leq \lambda_k(\mu_C) C_{N,\Omega} \int_D w_C - w.$$

The monotonicity property stated in [7, Proposition 6.1.5] shows that $\lambda_k(\mu_C) \leq \lambda_k(\Omega)$. In order to finish the proof, it suffices to give an upper bound for $\int_D w_C - w$.

We clearly have

$$\int_D |\nabla w_C|^2 + C \int_{\Omega^c} w_C^2 = \int_D w_C.$$

When $C \rightarrow \infty$ we have $w_c \rightarrow w$ in $H_0^1(D)$, and as a consequence $\lim_{C \rightarrow \infty} C \int_{\Omega^c} w_C^2 = 0$. This proves that for C large enough there exists a constant M such that

$$\left(\int_{\Omega^c} w_C \right)^2 \leq |\Omega^c| \int_{\Omega^c} w_C^2 \leq \frac{M}{C}.$$

Thus

$$\int_{\Omega^c} w_C - w \leq \frac{M}{C^{1/2}}.$$

For the estimate of $\int_{\Omega} w_C - w$ we use the fact that $w_C - w$ is harmonic in Ω , so

$$\int_{\Omega} w_C - w \leq \sup_{\partial\Omega} w_C |\Omega|.$$

It remains to estimate $\sup_{\partial\Omega} w_C$.

Assume that $B_{x_0, r_0} \subset \Omega^c$. Then

$$-\Delta w_C \leq 1 \text{ in } D,$$

so $w_C + \frac{|x - x_0|^2}{2N}$ is subharmonic in D . This implies

$$w_C(x_0) \leq \frac{1}{\omega_N r_0^N} \int_{B_{x_0, r_0}} \left(w_C + \frac{|x - x_0|^2}{2N} \right) \leq \frac{r_0^2}{2N} + \frac{1}{\omega_N^{1/2} r_0^{N/2}} \left(\int_{B_{x_0, r_0}} w_C^2 \right)^{1/2},$$

where we used the fact that $|x - x_0| \leq r$ and we applied the Cauchy Schwarz inequality. Thus, for C large enough we have

$$w_C(x_0) \leq \frac{r_0^2}{2N} + \frac{M}{\omega_N^{1/2} r_0^{N/2} C^{1/2}}.$$

Next, we choose r_0 of the form $C^{-\alpha}$, which gives us

$$w_C(x_0) \leq \frac{1}{2NC^{2\alpha}} + \frac{M}{\omega_N^{1/2} C^{(1-N\alpha)/2}}.$$

We choose $\alpha = 1/(N + 4)$, which gives the same exponent for C in the two terms of the above sum. Thus

$$w_C(x_0) \leq \left(\frac{1}{2N} + \frac{M}{\omega_N^{1/2}} \right) C^{-2/(N+4)}.$$

Clearly, as $C \rightarrow \infty$, x_0 can be chosen closer and closer to $\partial\Omega$. The fact that Ω is of class C^2 implies that Ω satisfies an exterior ball condition B_ρ . If $d(x_0, \partial\Omega) < \rho$ then we can apply the previous estimate.

To go from x_0 to the boundary $\partial\Omega$ we note that the Minkowski sum $\Omega + B_{C^{-\alpha}}$ satisfies an interior and exterior ball condition, if C is large enough. For simplicity, we denote $\Omega' = \Omega + B_{C^{-\alpha}}$ in the sequel. Thus Ω' is of class $C^{1,\alpha}$ and $\nabla w_{\Omega'}$ is well defined on $\partial\Omega'$. Furthermore, consider $B_{\rho'}$ an exterior ball tangent to Ω' and another concentric ball B_R such that B_R contains Ω' . The annulus A determined by $B_{\rho'}, B_R$ contains Ω' , and thus $w_{\Omega'} \leq w_A$ in Ω' and $|\nabla w_{\Omega'}| \leq |\nabla w_A|$ on $\partial\Omega'$. It is well known that w_A is Lipschitz, with a Lipschitz constant depending on ρ' and the diameter of Ω' . Thus, on $\partial\Omega'$ we have that $|\nabla w_{\Omega'}|$ is bounded, and since $|\nabla w_{\Omega'}|$ is maximal on the boundary, it follows that $w_{\Omega'}$ is Lipschitz.

The function $w_C - w_{\Omega'}$ is subharmonic on $\partial\Omega'$. As a consequence, we have

$$w_{\Omega+B_{C^{-\alpha}}} \geq \left(w_C - \left(\frac{1}{2N} + \frac{M}{\omega_N^{1/2}} \right) C^{-2/(N+4)} \right)^+,$$

which together with the Lipschitz continuity of $w_{\Omega+B_{C^{-\alpha}}}$ gives us that

$$w_C|_{\partial\Omega} \leq \left(\frac{1}{2N} + \frac{M}{\omega_N^{1/2}} \right) C^{-2/(N+4)} + M_2 C^{-\alpha},$$

where M_2 is the constant in the Lipschitz continuity result.

Thus

$$w_C|_{\partial\Omega} \leq \left(\frac{1}{2N} + \frac{M}{\omega_N^{1/2}} \right) C^{-2/(N+4)} + M_2 \ell^{1/2} C^{-1/(N+4)}.$$

Consequently, there exists a constant M_3 , depending on ε, N, D , such that

$$\int_D w_c - w \leq M_3 C^{-1/(N+4)}.$$

In conclusion, for C large enough, there exists a constant K such that

$$\frac{|\lambda_k(\Omega) - \lambda_k(\mu_C)|}{\lambda_k(\Omega)} \leq K C^{-1/(N+4)}.$$

□

Remark 6.1. Using techniques similar to [20, Lemma 3.4.11] we are able to prove that there is an upper bound of the form $K C^{-\delta}$ (with $K, \delta > 0$) for the relative error even in the more general case when Ω satisfies a ε -cone condition (equivalently, a uniform Lipschitz condition). The drawback is that we do not have an explicit formula for δ , like in the case presented above.

We remark that in the case $N = 2$, studied numerically in the previous section, the relative error is bounded theoretically by a term of order $C^{-1/6}$. If we look at the numerical errors, we see that from $C = 10^3$ to $C = 10^9$ the errors roughly decrease by one order of magnitude. This is in good correspondence with the theoretical result which predicts a decrease of the relative error by approximately one order of magnitude when C is multiplied by 10^6 . This correspondence shows that this theoretical error bound is close to being sharp in two dimensions.

7. NUMERICAL SETTING AND OPTIMIZATION ALGORITHM

In order to compute numerically the shape and the position of the optimal sets, we use the procedure described in Section 5. This technique has been introduced in [4] for the study of the case $\alpha = 0$. We recall that the problem we study has the form

$$\min \left\{ \sum_{i=1}^h \lambda_k(\Omega_i) + \alpha |\Omega_i| : \Omega_i \subset D \text{ quasi-open, } \Omega_i \cap \Omega_j = \emptyset \right\}. \quad (7.1)$$

where with $\lambda_k(\Omega)$ we denote the k -th eigenvalue of the Dirichlet Laplacian on $\Omega \subset D$.

For a given measurable function $\varphi : \Omega \in [0, 1]$ and constant $C > 0$, we consider the spectrum of the operator $-\Delta + C(1 - \varphi)$ on D , consisting on the eigenvalues with variational characterization

$$\lambda_k(\varphi, C) := \min_{S_k \subset H_0^1(\Omega)} \max_{u \in S_k} \frac{\int_{\Omega} |\nabla u|^2 + C(1 - \varphi)u^2 dx}{\int_{\Omega} u^2 dx},$$

where the minimum is over all k -dimensional subspaces S_k of $H_0^1(D)$. The corresponding k -th eigenfunction satisfies the equation

$$-\Delta u_k + C(1 - \varphi)u_k = \lambda_k(\varphi, C)u_k, \quad u_k \in H_0^1(D), \quad \int_D u_k^2 dx = 1. \quad (7.2)$$

By the general existence theorem of Buttazzo and Dal Maso [16], there is a solution $(\varphi_1^C, \dots, \varphi_h^C)$ of the problem

$$\min \left\{ \sum_{i=1}^h \left(\lambda_k(\varphi_i, C) + \alpha \int_D \varphi_i dx \right) : \varphi_i : D \rightarrow [0, 1] \text{ measurable}, \sum_{i=1}^h \varphi_i \leq 1 \right\}. \quad (7.3)$$

Moreover, by the approximation result [4, Theorem 2.4], or the result given by Theorem 1.5, we have that, for every $i = 1 \dots h$,

$$\lim_{C \rightarrow +\infty} \lambda_1(\varphi_i^C, C) = \lambda_1(\Omega_i) \quad \text{and} \quad \lim_{C \rightarrow +\infty} \varphi_i^C = \mathbb{1}_{\Omega_i},$$

where the second limit is strong in $L^1(D)$ and the h -uple $(\Omega_1, \dots, \Omega_h)$ is optimal for (7.1).

We were not able to prove that for $k \geq 2$ the functions φ_i^C converge to characteristic functions as $C \rightarrow \infty$. In [4] a concavity argument was used to prove the result, and this argument does not extend to the case $k \geq 2$. In the description of the algorithm we keep k general, but the numerical results presented are for $k = 1$. Although we don't have a theoretical justification of the convergence in the case $k = 2$, the algorithm behaves well and produces the expected results. For $k \geq 3$ we did not manage to obtain conclusive results.

Note that for $\alpha > 0$ solutions of problem 7.1 do not consist of partitions of D . Therefore the functions φ_l satisfy the non-overlapping constraint $\sum_{i=1}^h \varphi_i \leq 1$. This inequality constraint is not easy to treat numerically, so we choose to add an additional phase, representing the empty space. Define $\varphi_{h+1} := 1 - \sum_{i=1}^h \varphi_i$, the empty phase associated to the multiphase problem. Thus (7.3) is equivalent to

$$\min \left\{ \sum_{i=1}^h \lambda_k(\varphi_i, C) - \alpha \int_D \varphi_{h+1} dx : \varphi_i : D \rightarrow [0, 1] \text{ measurable}, \sum_{i=1}^{h+1} \varphi_i = 1 \right\}, \quad (7.4)$$

which is more suitable for numerical implementation. In this way (7.1) is reformulated as an optimal partitioning problem

$$\min \left\{ \sum_{i=1}^h \lambda_k(\Omega_i) - \alpha |\Omega_{h+1}| : \Omega_i \subset \mathbb{R}^d \text{ quasi-open}, \Omega_i \cap \Omega_j = \emptyset, \text{ for } i, j = 1, \dots, h+1 \right\}.$$

In this setting the numerical cost computation of the above problem involves the discrete approximation of the measure of Ω_{h+1} given by

$$|\Omega_{h+1}| \simeq \frac{1}{N^2} \sum_{i,j=1}^{N^2} \varphi_{i,j}^{h+1}.$$

In order to use an optimization algorithm we approximate the derivative of the eigenvalues $\lambda_k(\varphi_l, C)$ as a function of the values of the phases φ_l on the grid points. The precise expression of this derivative was given in [4] and has the form

$$\partial_{i,j} \lambda_k(\varphi_l, C) = -C(U_{i,j}^l)^2, \quad (7.5)$$

where U^l is the l -th normalized eigenvector solution of the corresponding discrete equation. The discrete derivative of the volume is given by

$$\partial_{i,j}|\Omega_{h+1}| = 1/N^2.$$

In order to perform the optimization under the constraint $\sum_{l=1}^{h+1} \varphi_l = 1$ we use the projection operator on the simplex

$$\mathbb{S}^h = \left\{ X = (X_1, \dots, X_{h+1}) \in [0, 1]^{h+1} : \sum_{l=1}^{h+1} X_l = 1 \right\},$$

defined by

$$\left(\Pi_{\mathbb{S}^h} \varphi^l \right)_{i,j} = \frac{|\varphi_{i,j}^l|}{\sum_{l=1}^{h+1} |\varphi_{i,j}^l|}.$$

More details about the justification of the choice of this non orthogonal projection operator can be found in [4]. We did not manage to improve this projection procedure. We observed that both aspects: the condition that the sum is equal to 1 and that the functions φ^l take values in $[0, 1]$, are essential in the optimization process, and this projection operator preserves them both.

The optimization procedure proposed in [4] was based on a steepest descent algorithm with an adapting step length. We improve the descent algorithm by introducing a linesearch procedure in order to determine the step length. A description of the procedure can be found in Algorithm 1. The number of iterations is significantly reduced, but each iteration needs multiple function evaluations.

Algorithm 1 Linesearch algorithm

Require: $\gamma_0, \omega > 1, x, d$ (descent direction)

- 1: $\gamma = \gamma_0$
- 2: Evaluate the cost c corresponding to x
- 3: $c_0 = c$ (variable which keeps previous cost)
- 4: **repeat**
- 5: $x_t = x + \gamma d$
- 6: $x_p = \Pi_{\mathbb{S}^h}(x_t)$ (projection on the constraint)
- 7: Evaluate the cost c_p corresponding to x_p
- 8: **if** $c_p < c_0$ **then**
- 9: $\gamma \leftarrow \omega \gamma$
- 10: **else**
- 11: **break**
- 12: **end if**
- 13: $c_0 = c_p$
- 14: **until**
- return** γ

In order to test the stability of our modified algorithm, we took a rectangular box which can be paved with regular hexagons, with one edge oriented horizontally, in a periodic setting. One possibility is to choose the edges of the rectangle having a ratio of $\sqrt{3}$, in the case of 6 cells, or $2/\sqrt{3}$ in the case of 12 cells. In each case we performed the optimization starting from random densities with sum 1. We observe that the resulting partitions are equivalent, and the corresponding costs are close. Results can be seen in Figure 3 (the case of 6 cells) and Figure 4 (the case of 12 cells). The cost evolution, in the case of 6 cells, is plotted in Figure 2.

In order to be able to study the minimizers of problem 7.1 in the case where D is not rectangular, we use a finite elements approach. We find a triangulation of D using the

Algorithm 2 General form of the optimization algorithm**Require:** $k, \alpha, h, \varepsilon, \gamma_0, p_{max}$

- 1: $p = 1$
- 2: Choose random initial densities (φ^l) and project them on the constraint
- 3: **repeat**
- 4: Compute $c = F(\varphi^l)$ (the cost functional)
- 5: Choose descent direction $d = -\nabla F(\varphi^l)$
- 6: Find step length γ using the linesearch algorithm
- 7: Update $\varphi^l \leftarrow \varphi^l - \gamma d$
- 8: $\varphi^l \leftarrow \Pi_{S^h}(\varphi^l)$ (project on the constraint)
- 9: $p \leftarrow p + 1$
- 10: **until** $p = p_{max}$ or $\gamma \|\nabla F(\varphi^l)\|_{\ell^\infty} < \varepsilon$

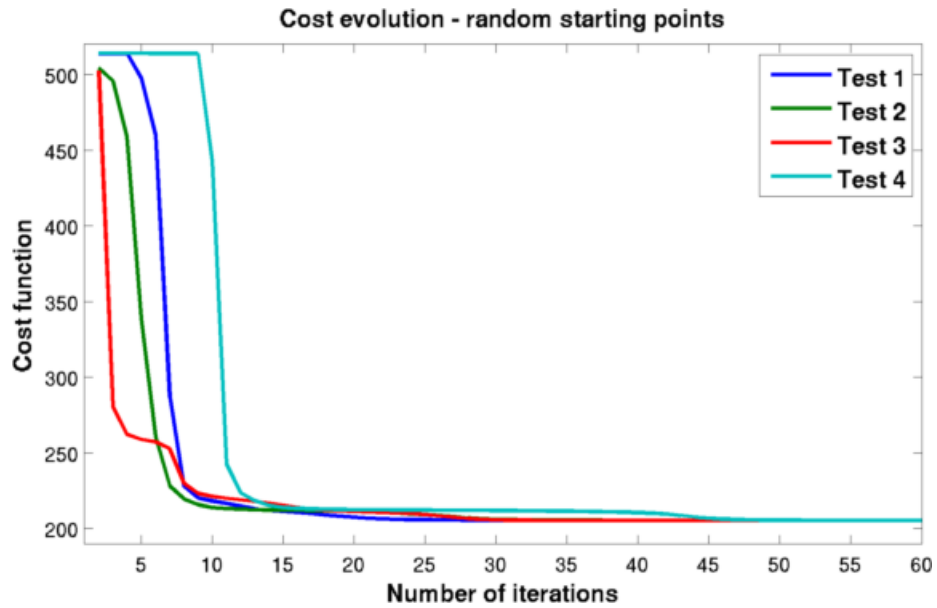


FIGURE 2. Cost evolution in the four cases presented in Figure 3

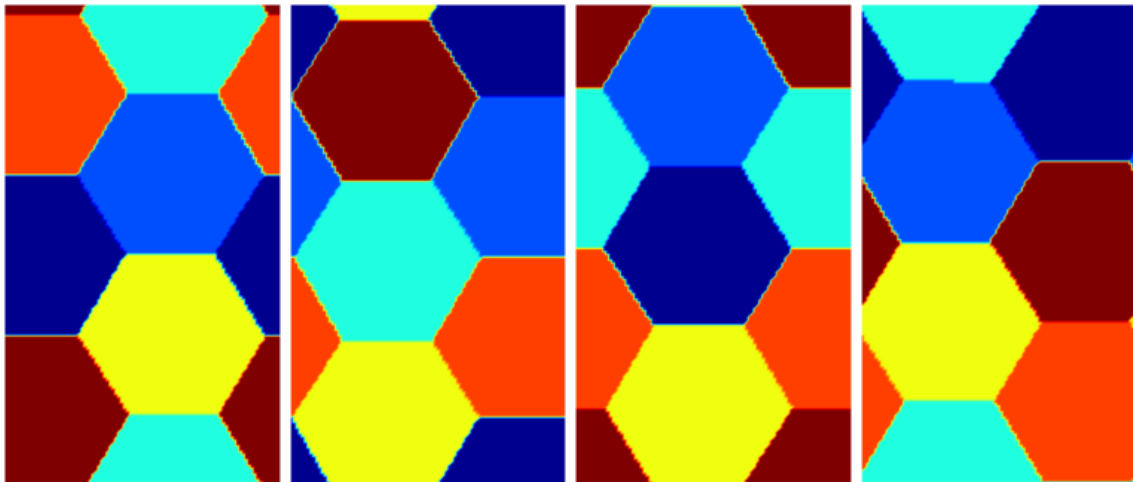


FIGURE 3. Optimal results - 6 cells on a periodic domain, starting each time from random densities. Optimal numerical value (left to right): 205.21, 205.23, 205.22, 205.22

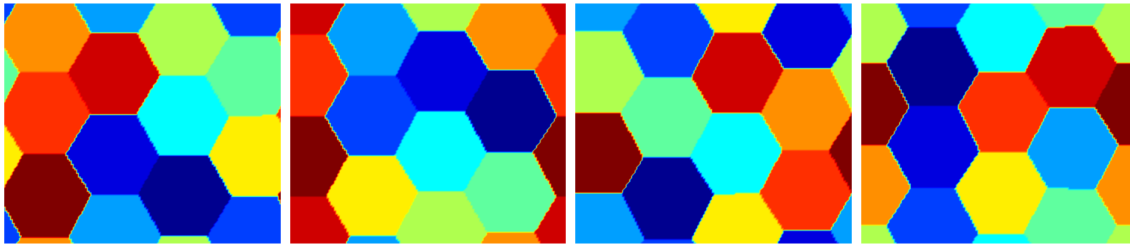


FIGURE 4. Optimal results - 12 cells on a periodic domain, starting each time from random densities. Optimal numerical value (left to right): 1512.85, 1512.83, 1513.12, 1513.26

software Distmesh [22], or by specifying a regular triangulation directly (when possible). We compute the associated rigidity and mass matrices K and M , respectively. Then, if φ is a vector containing the values of the discretization of Ω , we are left to solve the problem

$$\int_D \nabla u \nabla v + \int_D C(1 - \varphi)uv = \lambda \int_D uv,$$

which has the discrete form

$$v^T K u + C v^T \text{diag}(1 - \varphi) M u = \lambda v^T M u.$$

Since this is true for each v , we are left with the generalized eigenvalue problem

$$(K + C \text{diag}(1 - \varphi) M) u = \lambda M u.$$

In this way, we are able to find numerical minimizers for problem 7.1 even when D is not rectangular (see Figures 7,10). The drawback is that finding generalized eigenvalues is more time consuming than finding eigenvalues. When working on a rectangular domain, using finite differences, we can easily handle discretizations of 200×200 (40000 points) on a single machine⁴. For the finite elements case we use triangulations with roughly 5000 points.

8. DISCUSSION OF THE NUMERICAL RESULTS

In this section we present some numerical simulations that confirm the theoretical results stated in Theorem 1.3 and the article [9]. Furthermore, the numerical simulations in the periodic case, indicate that as α decreases, the cells of the multiphase configuration are monotonically increasing. This was also observed in the case of non-periodic conditions, when the domain has a certain symmetry, which allows a well behaved circle packing. Note that, when the size of the box is well chosen, there exists an optimal parameter α , such that the optimal configuration consists of the hexagonal circle packing configuration. If the observed shape monotonicity property is true, then the actual spectral partitioning problem ($\alpha = 0$) can be solved, and the optimal partition is formed of regular hexagons. We note that this result concerning the case $\alpha = 0$ is still an open problem, while results of [4] confirm numerically this conjecture (see Figures 6,7, as well as Figure 5).

In all the cases the lack of triple junction points, proved in [9], is clearly observed, provided that the parameter $\alpha > 0$ is large enough. The lack of double points on the boundary of the square proved in Theorem 1.3 can also be noticed in Figures 5,10. Another phenomenon that can be observed is that the sets Ω_i near the corners of D do not fill the corner. This is a fact that can be easily proved by adding a ball B (i.e. subsolution for the functional $\lambda_1 + \alpha|\cdot|$) outside D , for which the corner of the square lies on the sphere ∂B . Now the claim can be deduced by the monotonicity Theorem 2.4 (B), as in Theorem 1.3.

Some fine qualitative properties of the optimal configurations $(\Omega_1, \dots, \Omega_h, \Omega_{h+1})$, which are still open questions, were observed during the numerical simulations.

⁴Processor: i7 quad-core 2.2Gh, 6GB of RAM

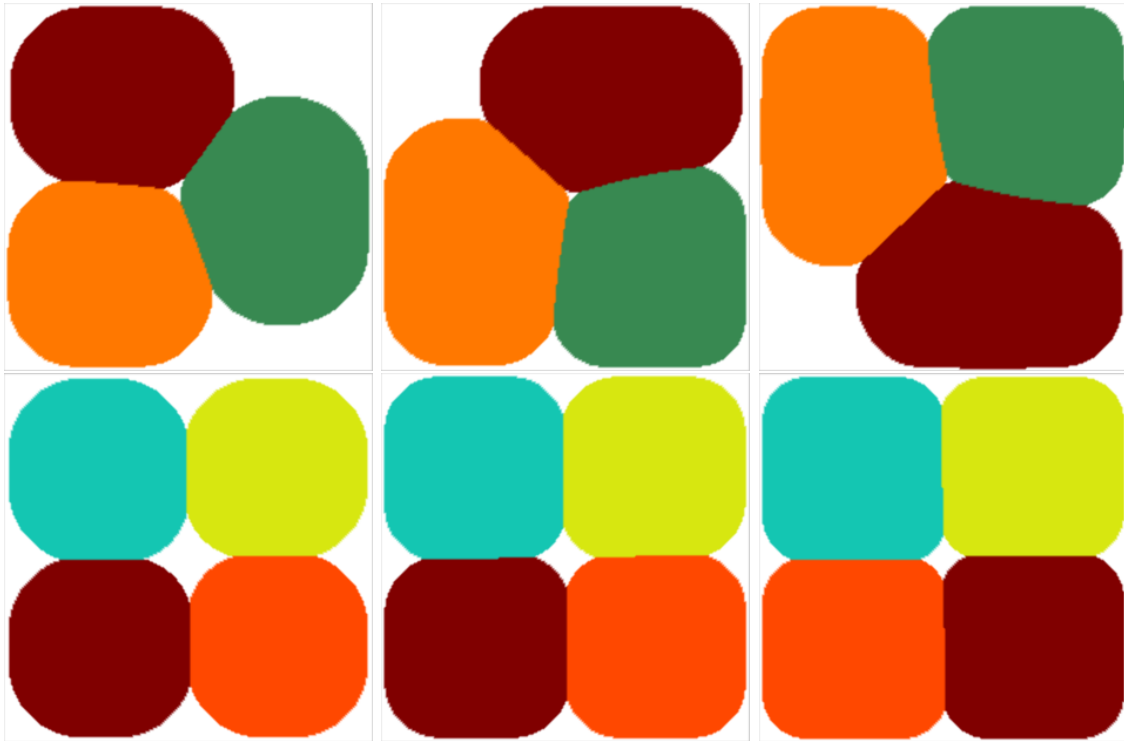


FIGURE 5. $k = 1$, 200×200 non-periodic grid, 3 phases ($\alpha = 170, 100, 80$) and 4 phases ($\alpha = 250, 150, 100$)

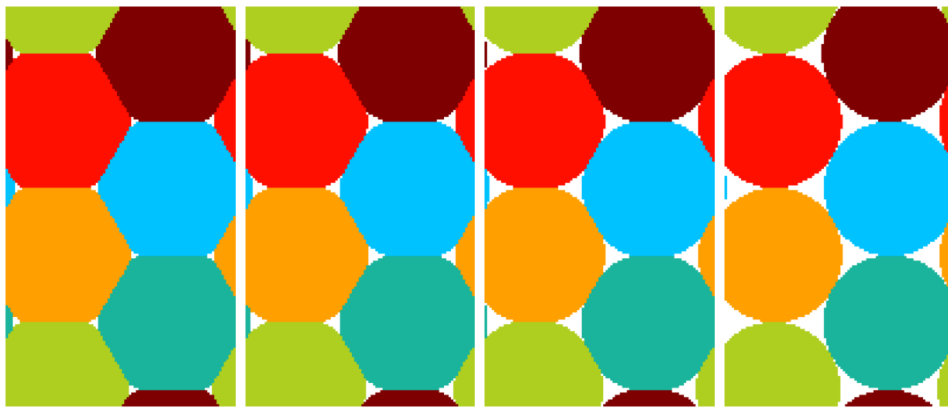


FIGURE 6. $k = 1$, illustration of the monotonicity property. Values of α : 150, 200, 250, 300 (left to right)

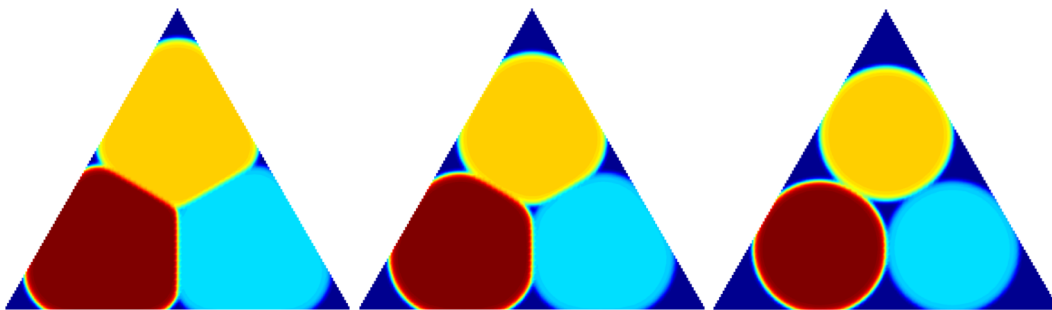


FIGURE 7. $k = 1$, illustration of the monotonicity property in the case of an equilateral triangle. Values of α : 10, 25, 50 (left to right)

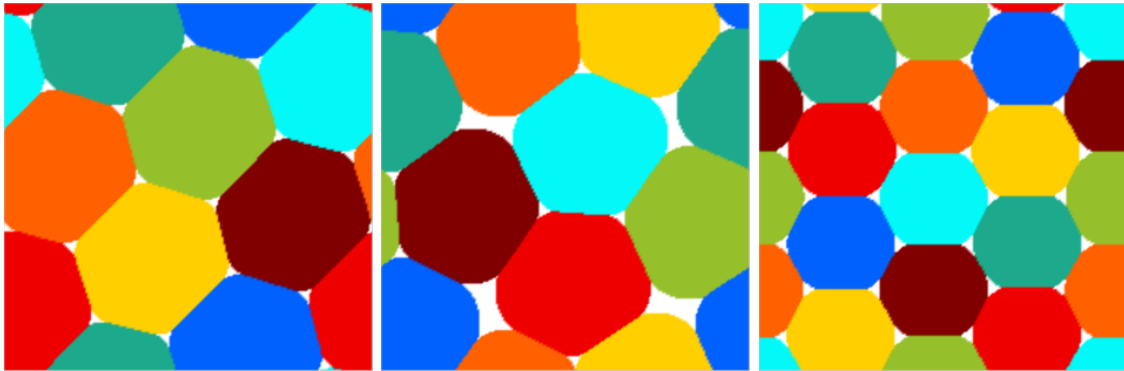


FIGURE 8. $k = 1$, 200×200 periodic grid, 8 phases, $\alpha = 500, 580$ and $k = 2$, 8 phases, $\alpha = 270$

- The set of one-phase points $\partial\Omega_j \cap \partial\Omega_{h+1}$ on the boundary of the j th optimal cell Ω_j is locally a graph of a *convex function*.
- For each pair of distinct indices $i, j \in \{1, \dots, h\}$, there are exactly two boundary two-phase points on the common boundary $\partial\Omega_i \cap \partial\Omega_j$, i.e.

$$\mathcal{H}^0(\partial\Omega_i \cap \partial\Omega_j \cap \partial\Omega_{h+1}) = 2.$$

- If $x_0 \in \partial\Omega_i \cap \partial\Omega_j \cap \partial\Omega_{h+1}$ is a boundary two-phase point, then the set $\Omega_i \cap \Omega_j$ has a cusp in x_0 . More precisely, for $r > 0$ small enough, the free boundaries $\partial\Omega_i \cap \partial\Omega_{h+1} \cap B_r(x_0)$ and $\partial\Omega_j \cap \partial\Omega_{h+1} \cap B_r(x_0)$ are graphs of convex functions meeting tangentially in the origin x_0 .

Finally, we considered the periodic version of the problem (1.2) on the square $[0, 1] \times [0, 1]$ and in other rectangular domains, in attempt to simulate a "partition" of the whole space \mathbb{R}^2 (see Figure 8, Figure 6). For small enough constants $\alpha > 0$ we obtain a configuration with touching hexagons with rounded corners, in support of the numerical results in [4].

Most of the tests we made were in the case $k = 1$, but the algorithm works for $k = 2$ as well. The main issue in the case of higher eigenvalues concerns the differentiability of the eigenvalues with respect to perturbations, which is well known to be closely related to their multiplicity. Secondly, we were not able to prove that for $k \geq 2$ the relaxed formulation converges to the actual problem when $C \rightarrow +\infty$. Nevertheless, we were able to obtain some interesting numerical results also in the case $k = 2$ and one example can be seen in Figure 8.

As stated in Theorem 4.3 the theoretical results also extend to the case of the Laplace-Beltrami fundamental eigenvalues on surfaces. Using the same finite elements procedure as in the case of non-rectangular domains, we were able to compute numerically some optimal configurations on the sphere, observing the same behavior as in the plane: the lack of triple points and monotonicity with respect to α . (see Figure 9) We notice that in the cases $h \in \{3, 4, 6, 12\}$ the optimal configurations converge to the corresponding regular tiling of the sphere (Y partition, regular tetrahedron, cube, dodecahedron) as $\alpha \rightarrow 0$.

REFERENCES

- [1] H. W. Alt and L. A. Caffarelli. Existence and regularity for a minimum problem with free boundary. *J. Reine Angew. Math.*, 325:105–144, 1981.
- [2] H. W. Alt, L. A. Caffarelli, and A. Friedman. Variational problems with two phases and their free boundaries. *Trans. Amer. Math. Soc.*, 282(2):431–461, 1984.
- [3] A. H. Barnett and T. Betcke. Stability and convergence of the method of fundamental solutions for Helmholtz problems on analytic domains. *J. Comput. Phys.*, 227(14):7003–7026, 2008.
- [4] B. Bourdin, D. Bucur, and É. Oudet. Optimal partitions for eigenvalues. *SIAM J. Sci. Comput.*, 31(6):4100–4114, 2009/10.

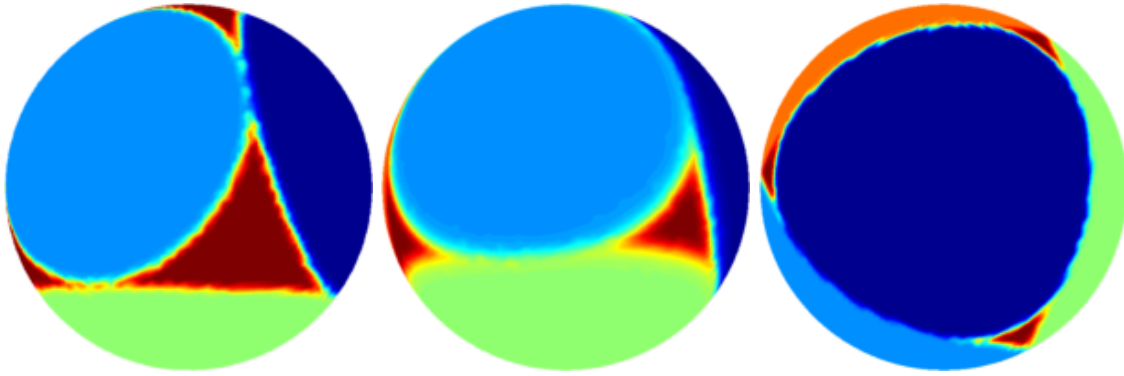


FIGURE 9. Optimal configurations on the sphere in the case of four phases, for decreasing values of α

- [5] T. Briançon and J. Lamboley. Regularity of the optimal shape for the first eigenvalue of the Laplacian with volume and inclusion constraints. *Ann. Inst. H. Poincaré Anal. Non Linéaire*, 26(4):1149–1163, 2009.
- [6] D. Bucur. Minimization of the k -th eigenvalue of the Dirichlet Laplacian. *Arch. Ration. Mech. Anal.*, 206(3):1073–1083, 2012.
- [7] D. Bucur and G. Buttazzo. *Variational methods in shape optimization problems*. Progress in Nonlinear Differential Equations and their Applications, 65. Birkhäuser Boston, Inc., Boston, MA, 2005.
- [8] D. Bucur, G. Buttazzo, and B. Velichkov. Spectral optimization problems for potentials and measures. *SIAM J. Math. Anal.*, 46(4):2956–2986, 2014.
- [9] D. Bucur and B. Velichkov. Multiphase shape optimization problems. *SIAM J. Control Optim.*, 52(6):3556–3591, 2014.
- [10] L. A. Caffarelli, D. Jerison, and C. E. Kenig. Some new monotonicity theorems with applications to free boundary problems. *Ann. of Math. (2)*, 155(2):369–404, 2002.
- [11] L. A. Cafferelli and F. H. Lin. An optimal partition problem for eigenvalues. *J. Sci. Comput.*, 31(1-2):5–18, 2007.
- [12] S.-M. Chang, C.-S. Lin, T.-C. Lin, and W.-W. Lin. Segregated nodal domains of two-dimensional multispecies Bose-Einstein condensates. *Phys. D*, 196(3-4):341–361, 2004.
- [13] M. Conti, S. Terracini, and G. Verzini. An optimal partition problem related to nonlinear eigenvalues. *J. Funct. Anal.*, 198(1):160–196, 2003.
- [14] E. B. Davies. *Heat kernels and spectral theory*, volume 92 of *Cambridge Tracts in Mathematics*. Cambridge University Press, Cambridge, 1989.
- [15] L. C. Evans and R. F. Gariepy. *Measure theory and fine properties of functions*. Studies in Advanced Mathematics. CRC Press, Boca Raton, FL, 1992.
- [16] G. D. M. G. Buttazzo. An existence result for a class of shape optimization problems. *Arch. Rational Mech. Anal.*, 122:183–195, 1993.
- [17] E. Giusti. *Minimal surfaces and functions of bounded variation*, volume 80 of *Monographs in Mathematics*. Birkhäuser Verlag, Basel, 1984.
- [18] B. Helffer, T. Hoffmann-Ostenhof, and S. Terracini. Nodal domains and spectral minimal partitions. *Ann. Inst. H. Poincaré Anal. Non Linéaire*, 26(1):101–138, 2009.
- [19] A. Henrot. *Extremum problems for eigenvalues of elliptic operators*. Frontiers in Mathematics. Birkhäuser Verlag, Basel, 2006.
- [20] A. Henrot and M. Pierre. *Variation et optimisation de formes*, volume 48 of *Mathématiques & Applications (Berlin) [Mathematics & Applications]*. Springer, Berlin, 2005. Une analyse géométrique. [A geometric analysis].
- [21] F. Maggi. *Sets of finite perimeter and geometric variational problems*, volume 135 of *Cambridge Studies in Advanced Mathematics*. Cambridge University Press, Cambridge, 2012. An introduction to geometric measure theory.
- [22] P. olof Persson and G. Strang. A simple mesh generator in matlab. *SIAM Review*, 46, 2004.
- [23] B. Velichkov. *Existence and regularity results for some shape optimization problems*. PhD thesis, Scuola Normale Superiore di Pisa, Université Joseph Fourier, 2013. available at <http://cvgmt.sns.it>.
- [24] B. Velichkov. A note on the monotonicity formula of Caffarelli-Jerison-Kenig. *Atti Accad. Naz. Lincei Rend. Lincei Mat. Appl.*, 25(2):165–189, 2014.

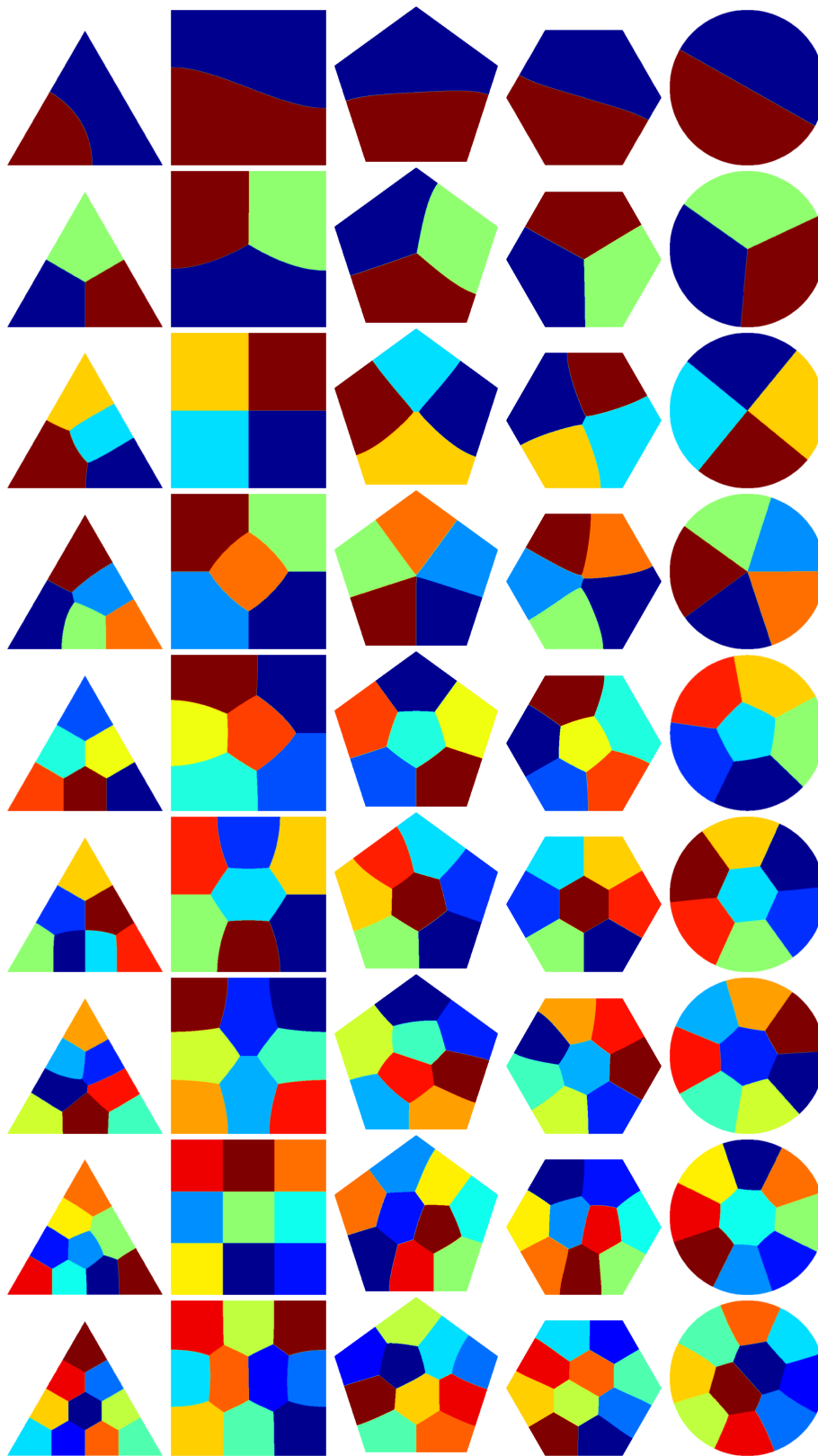


FIGURE 10. Optimal partitions ($\alpha = 0$) for some generic domains D