

Overview Submissions and Data

Submitted Data Sets

- 2009: 31 noiseless and 21 noisy “data sets”
- 2010: 24 noiseless and 16 noisy “data sets”
- 2012: 30 noiseless and 4 noisy “data sets”
- 2013: 31 noiseless "data sets"
- **Algorithms**: RCGAs (e.g. plain, PCX), EDAs (e.g. IDEA), BFGS, NEWUAO, Simplex & (many) other “classical” methods, ESs (e.g. CMA), PSO, DE, Memetic Alg, Ant-Stigmergy Alg, Bee Colony, EGS, SPSA, Meta-Strategies...

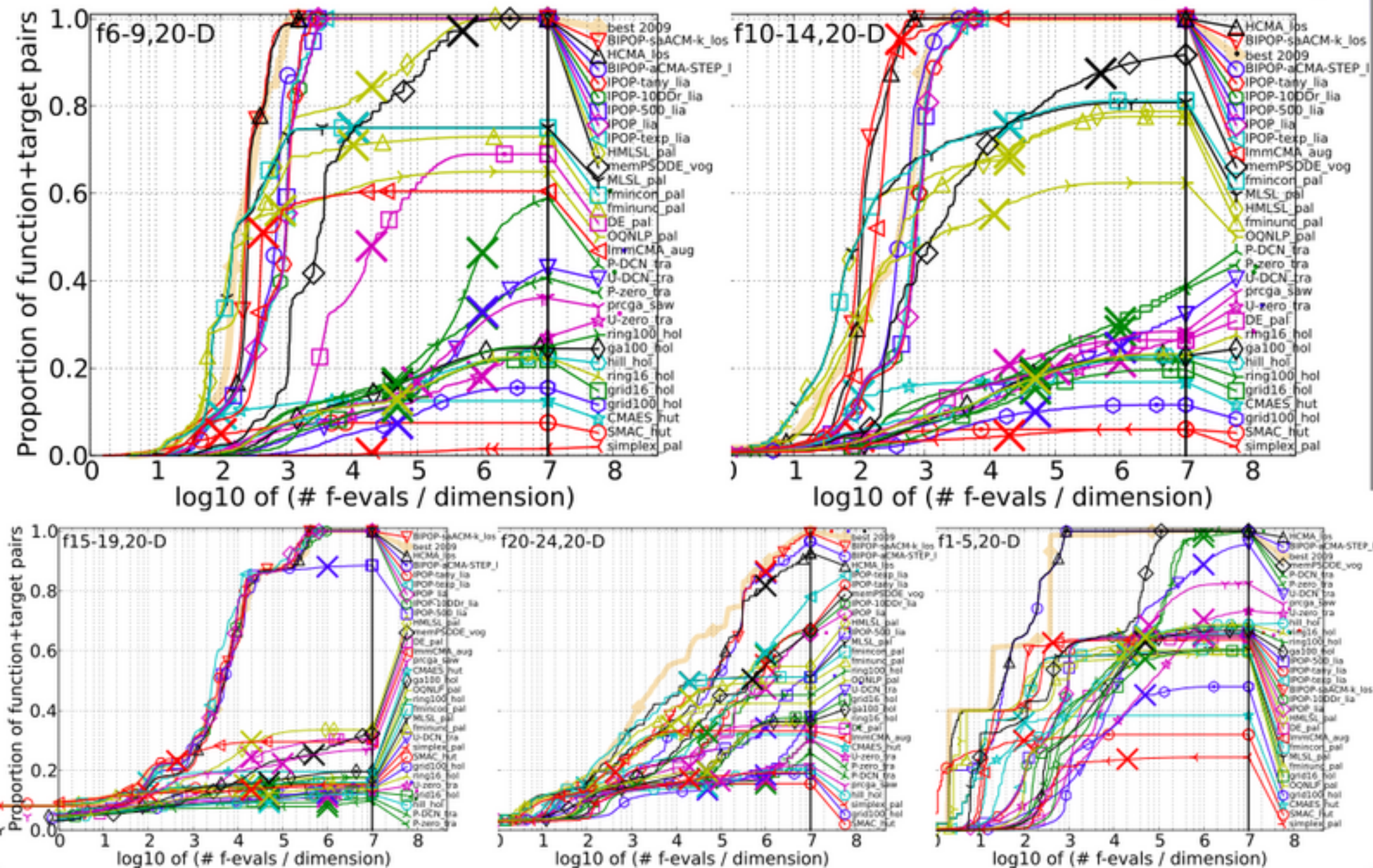
Test Functions

<http://coco.gforge.inria.fr>

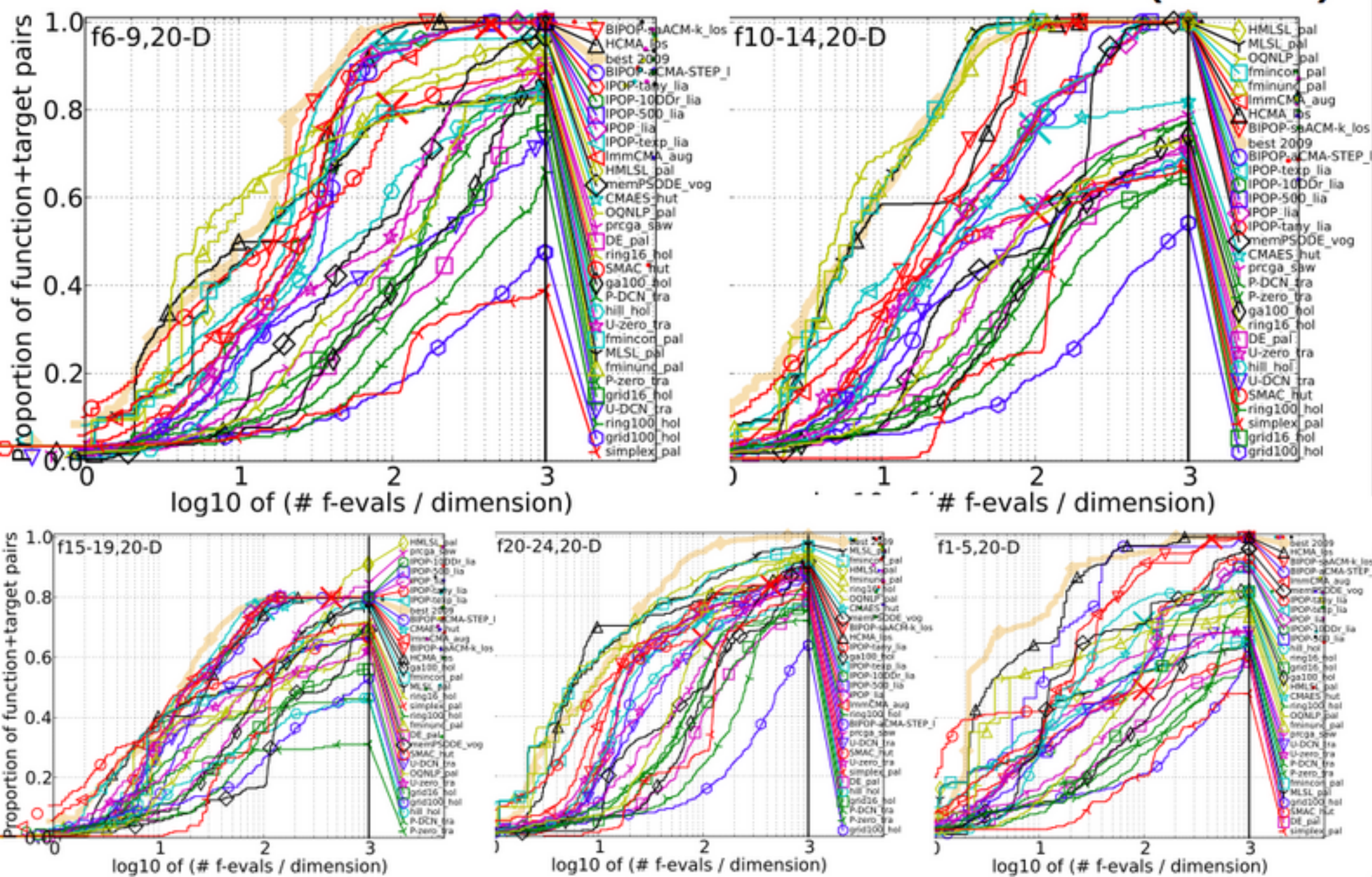
1	Separable functions	
1.1	Sphere Function
1.2	Ellipsoidal Function
1.3	Rastrigin Function
1.4	Büche-Rastrigin Function
1.5	Linear Slope
2	Functions with low or moderate conditioning	
2.6	Attractive Sector Function
2.7	Step Ellipsoidal Function
2.8	Rosenbrock Function, original
2.9	Rosenbrock Function, rotated
3	Functions with high conditioning and unimodal	
3.10	Ellipsoidal Function
3.11	Discus Function
3.12	Bent Cigar Function
3.13	Sharp Ridge Function
3.14	Different Powers Function
4	Multi-modal functions with adequate global structure	
4.15	Rastrigin Function
4.16	Weierstrass Function
4.17	Schaffers F7 Function
4.18	Schaffers F7 Function, moderately ill-conditioned
4.19	Composite Griewank-Rosenbrock Function F8F2
5	Multi-modal functions with weak global structure	
5.20	Schwefel Function
5.21	Gallagher's Gaussian 101-me Peaks Function
5.22	Gallagher's Gaussian 21-hi Peaks Function
5.23	Katsuura Function
5.24	Lunacek bi-Rastrigin Function

- "absolute" target values (run lengths shown up to dimension $\times 1e7$): log-uniform, Delta-f is between 100 and $1e-8$
- relative target values (run lengths shown up to dimension $\times 1e3$): based on the GECCO BBOB 2009 best algorithm, log-uniform run-lengths between 3 and 50 times dimension evaluations

Overview results 2013 (20-D)

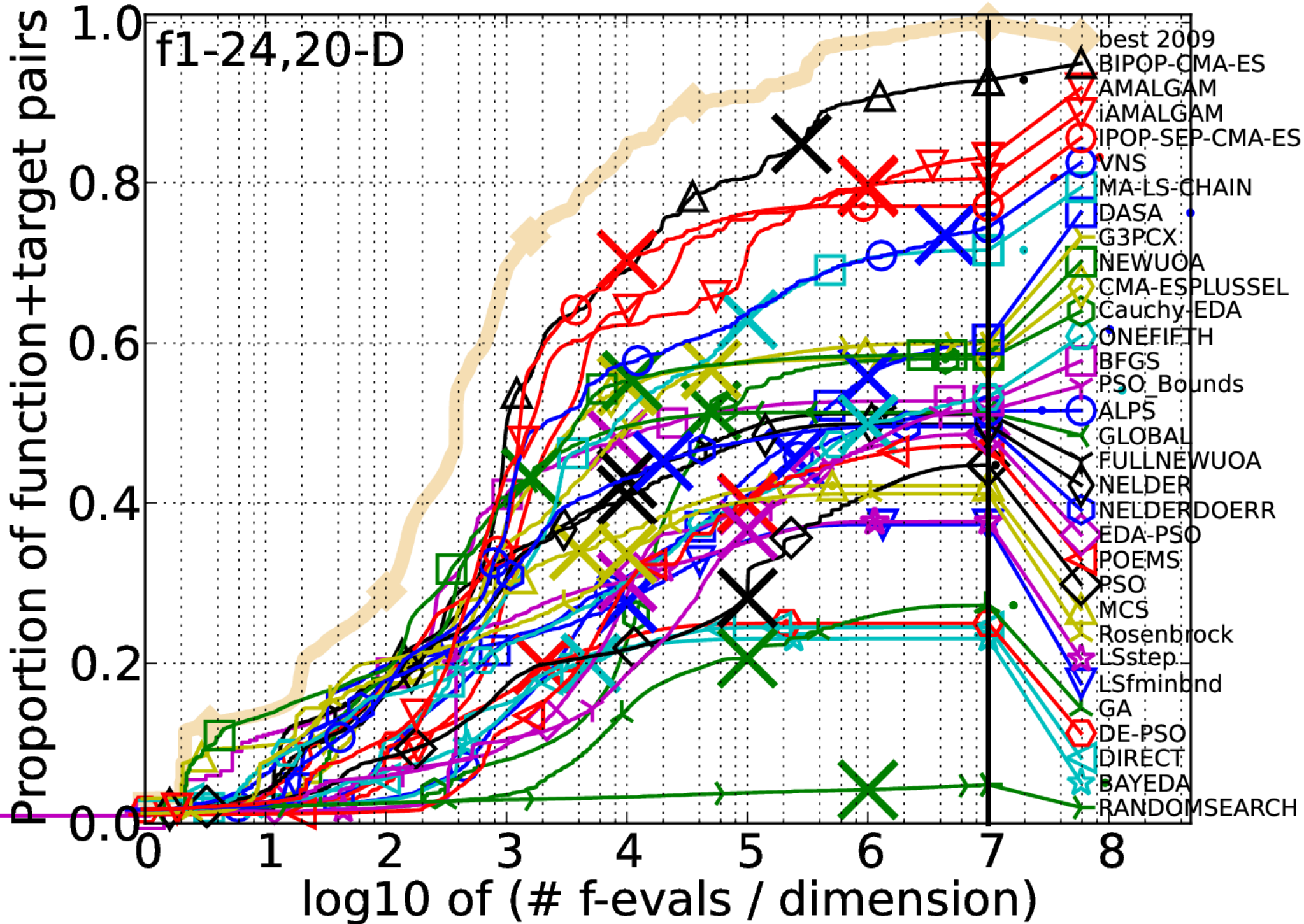


Overview results 2013 (20-D)



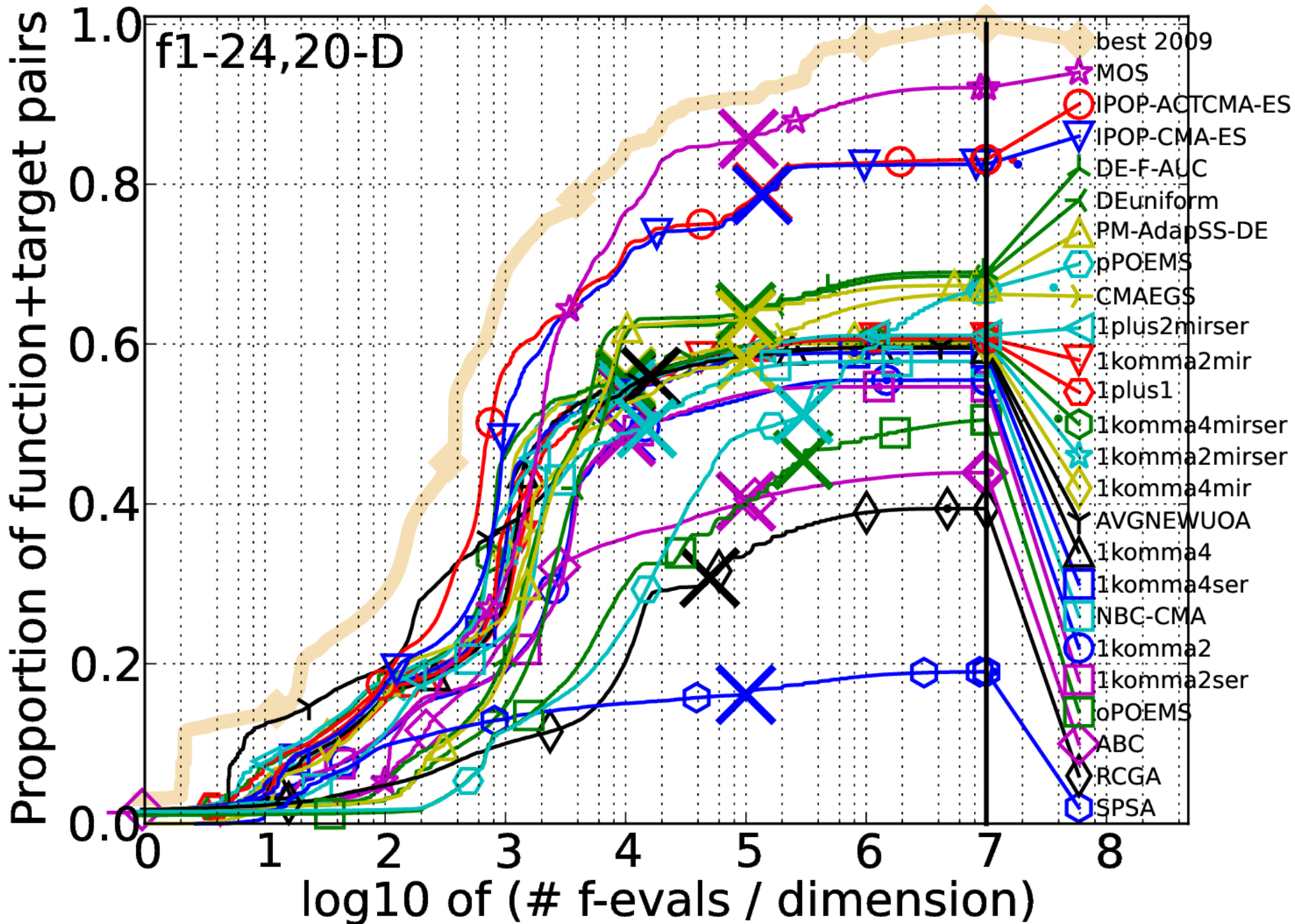
2009

f1-24,20-D



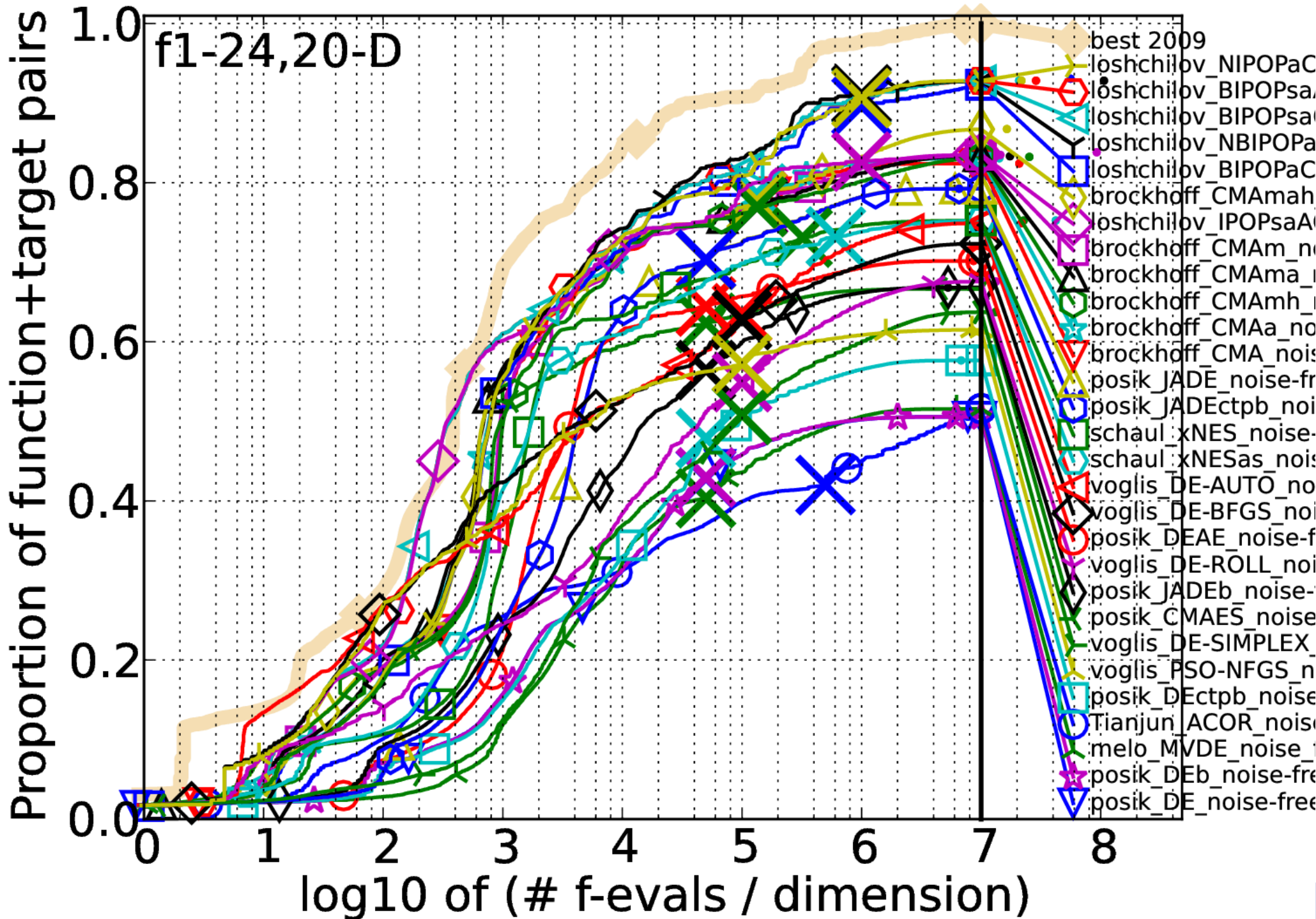
2010

f1-24,20-D

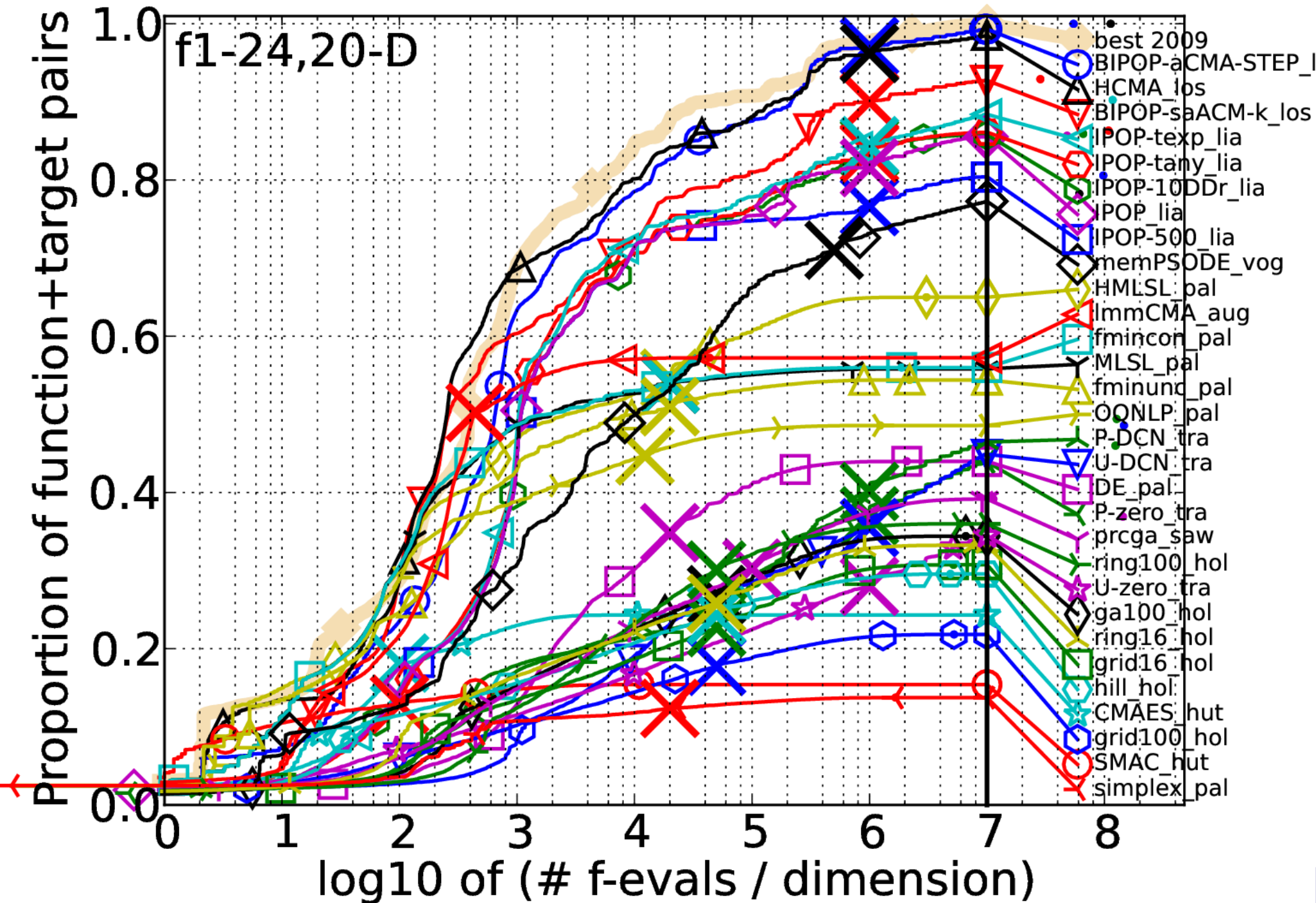


2012

f1-24,20-D

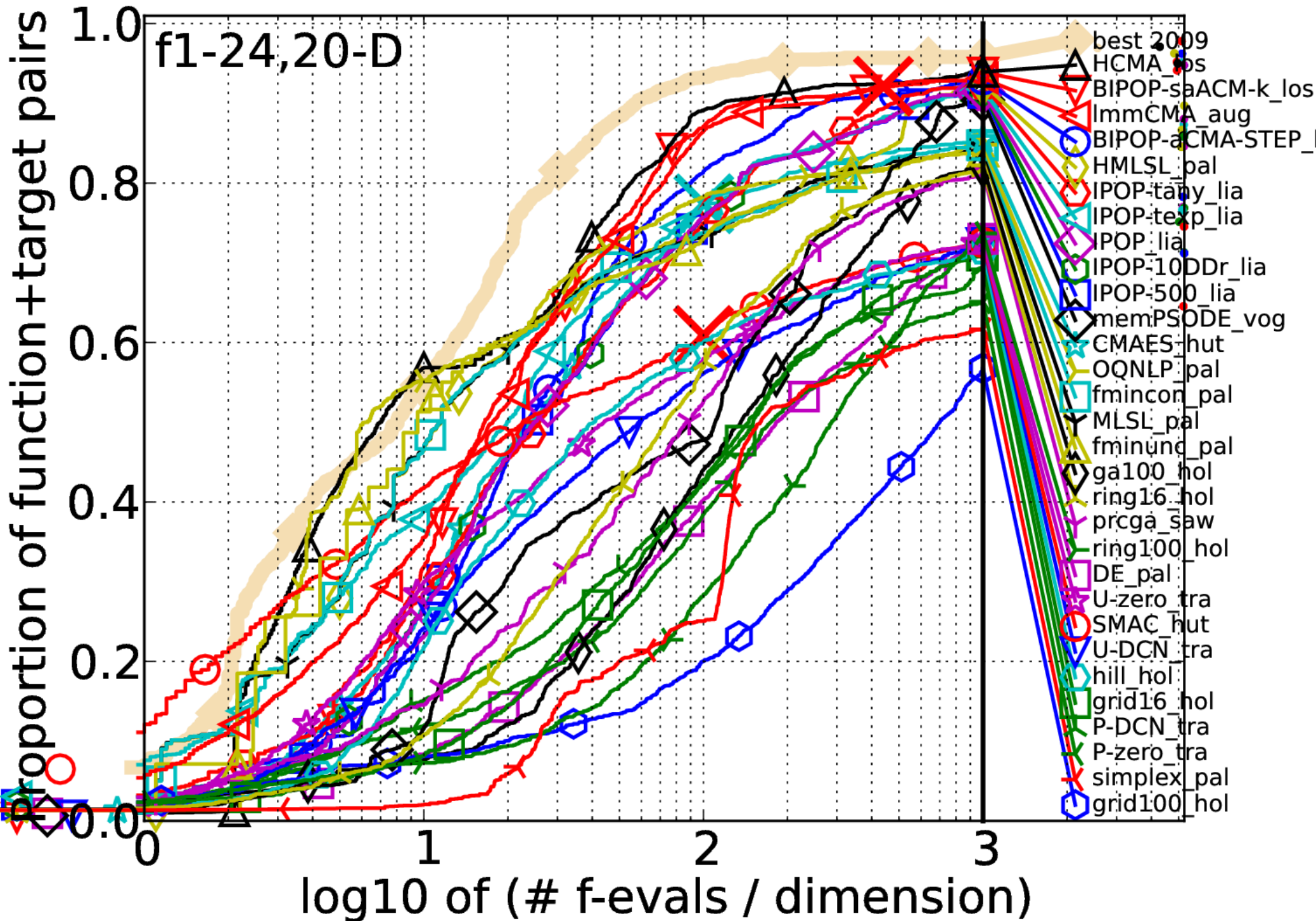


2013

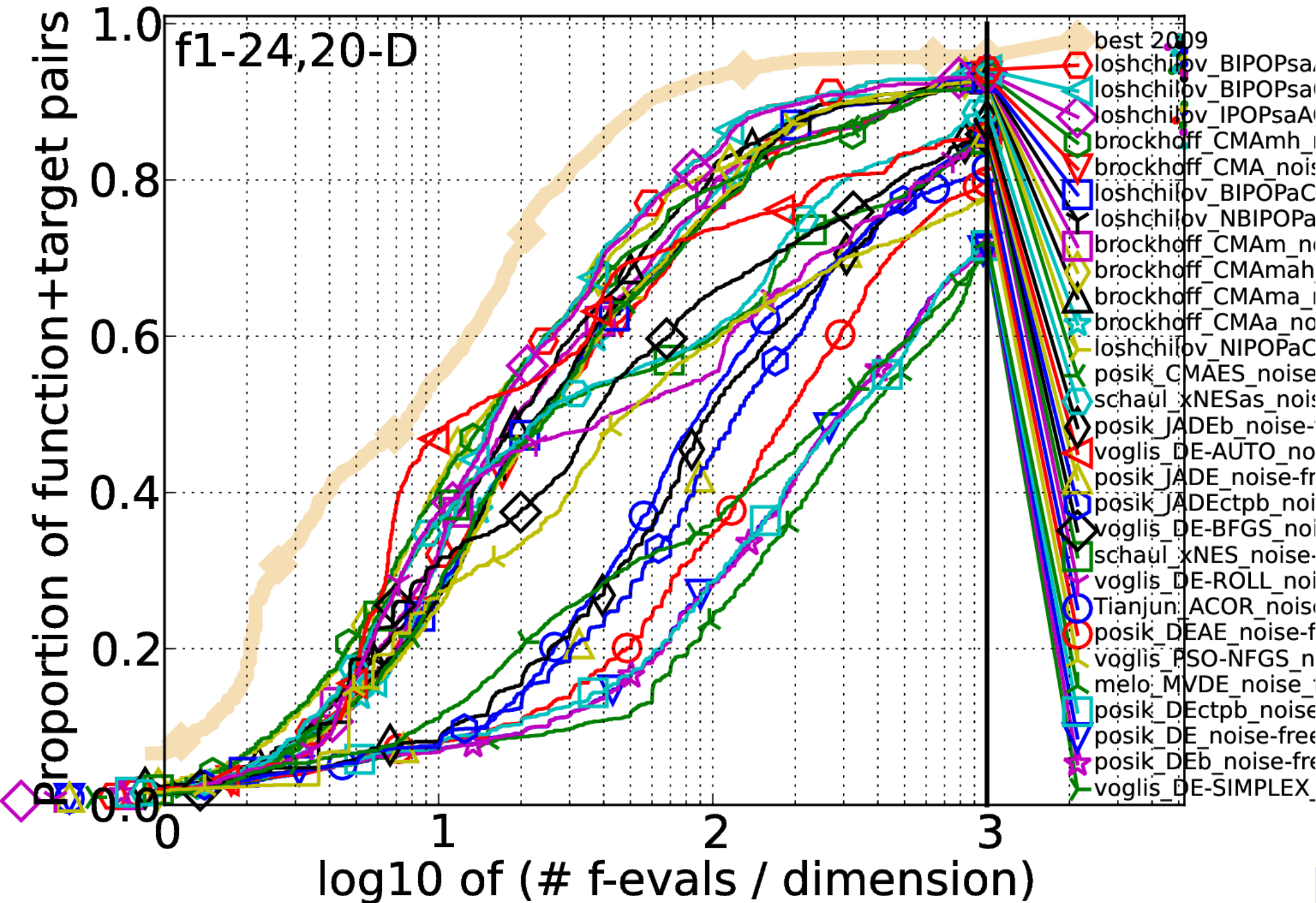


2013

f1-24,20-D

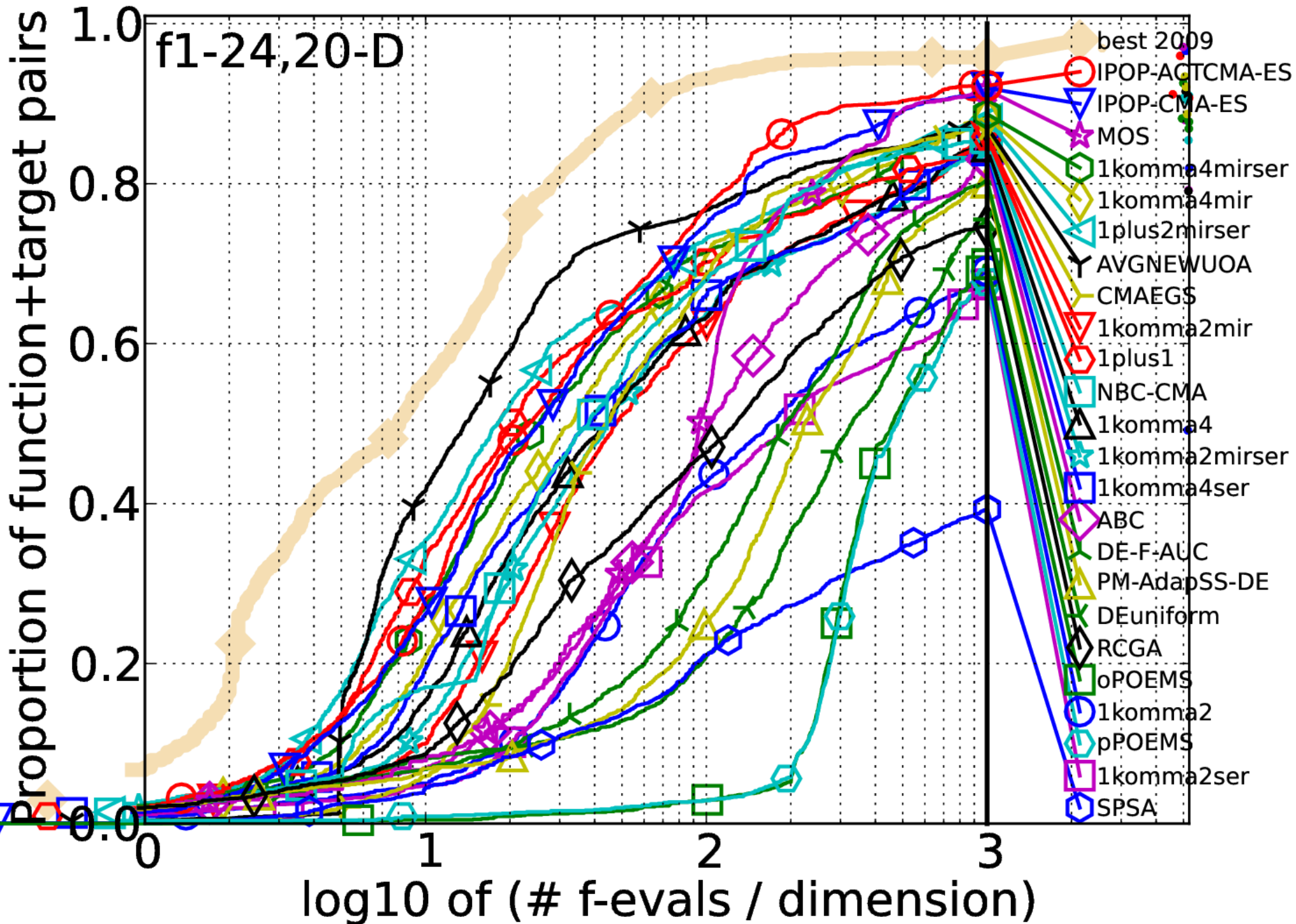


2012



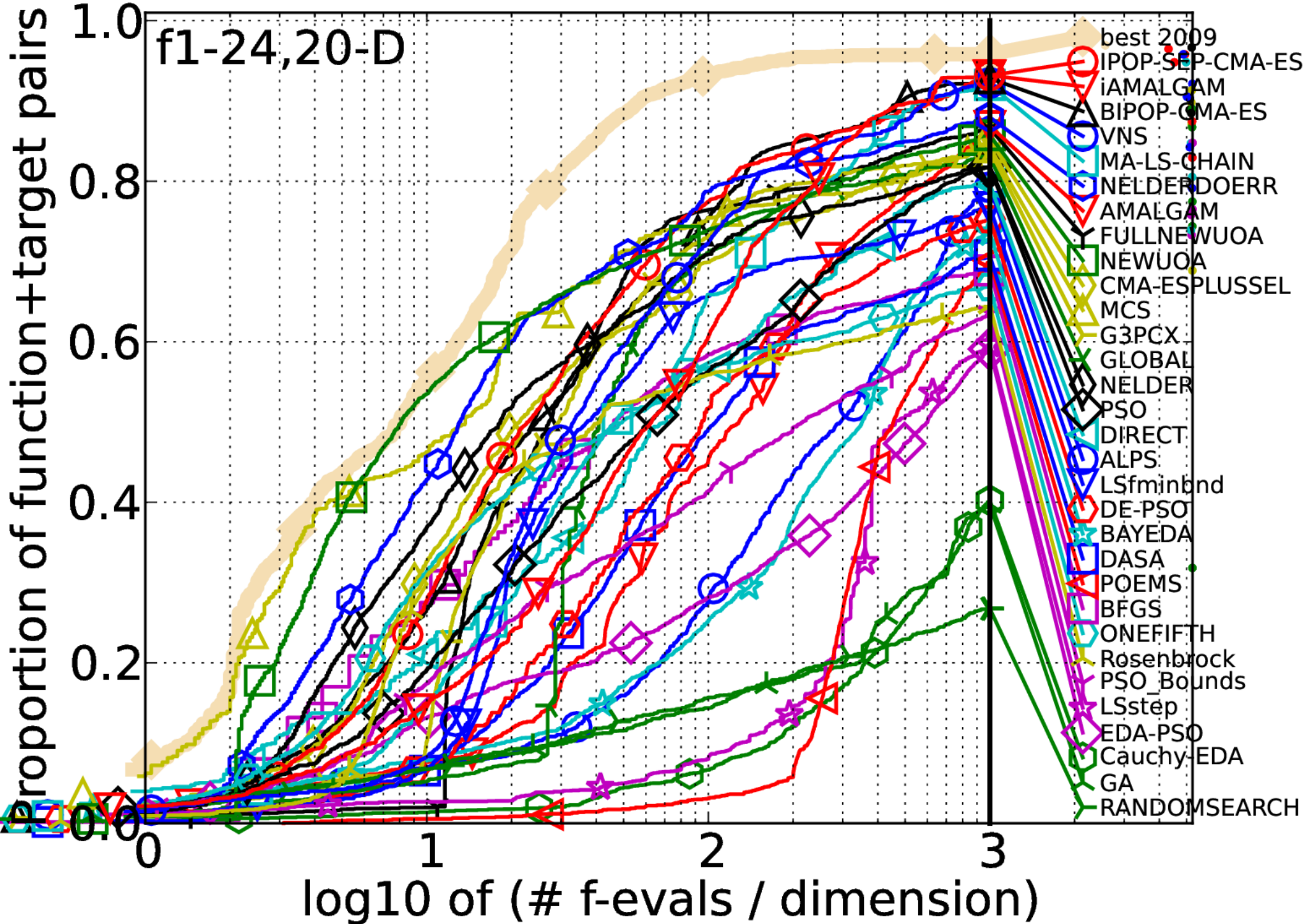
2010

f1-24,20-D



2009

f1-24,20-D



All Years, Selection

